



CALL NO. 400

CONTRACT ID. 182912

HARLAN COUNTY

FED/STATE PROJECT NUMBER 048GR18M080-FD04

DESCRIPTION US 119 BRIDGES PREVENTATIVE MAINTENANCE.

WORK TYPE BRIDGE REPAIRS EXPANSION JOINTS

PRIMARY COMPLETION DATE 11/15/2019

LETTING DATE: October 26,2018

Sealed Bids will be received electronically through the Bid Express bidding service until 10:00 AM EASTERN DAYLIGHT TIME October 26,2018. Bids will be publicly announced at 10:00 AM EASTERN DAYLIGHT TIME.

NO PLANS ASSOCIATED WITH THIS PROJECT.

REQUIRED BID PROPOSAL GUARANTY: Not less than 5% of the total bid.

TABLE OF CONTENTS

PART I	SCOPE OF WORK
	<ul style="list-style-type: none">• PROJECT(S), COMPLETION DATE(S), & LIQUIDATED DAMAGES• CONTRACT NOTES• STATE CONTRACT NOTES• SPECIAL NOTE(S) APPLICABLE TO PROJECT• LIQUIDATED DAMAGES• SKETCH MAP(S)• MATERIAL SUMMARY
PART II	SPECIFICATIONS AND STANDARD DRAWINGS
	<ul style="list-style-type: none">• SPECIFICATIONS REFERENCE• SUPPLEMENTAL SPECIFICATION
PART III	EMPLOYMENT, WAGE AND RECORD REQUIREMENTS
	<ul style="list-style-type: none">• LABOR AND WAGE REQUIREMENTS• EXECUTIVE BRANCH CODE OF ETHICS• KENTUCKY EQUAL EMPLOYMENT OPPORTUNITY ACT OF 1978 LOCALITY / STATE• PROJECT WAGE RATES / STATE
PART IV	INSURANCE
PART V	BID ITEMS

PART I
SCOPE OF WORK

ADMINISTRATIVE DISTRICT - 11

CONTRACT ID - 182912

048GR18M080-FD04

COUNTY - HARLAN

PCN - MB04801191801
FD04 048 0119 B00110N

US 119 (MP 17.269). POOR FORK OF CUMBERLAND RIVER.BRIDGE REPAIRS EXPANSION JOINTS SYP NO. 11-10047.00.

GEOGRAPHIC COORDINATES LATITUDE 36:53:30.00 LONGITUDE 83:16:11.00

PCN - MB04801191802
FD04 048 0119 B00111N

US 119 (MP 18.842). BRIDGE OVER POOR FORK OF CUMBERLAND RIVER.BRIDGE REPAIRS EXPANSION JOINTS SYP NO. 11-10047.00.

GEOGRAPHIC COORDINATES LATITUDE 36:54:02.00 LONGITUDE 83:14:38.00

PCN - MB04801191803
FD04 048 0119 B00100N

US 119 (MP 21.827). BRIDGE OVER POOR FORK OF CUMBERLAND RIVER.BRIDGE REPAIRS EXPANSION JOINTS SYP NO. 11-10047.00.

GEOGRAPHIC COORDINATES LATITUDE 36:54:51.00 LONGITUDE 83:11:36.00

PCN - MB04801191804
FD04 048 0119 B00101N

US 119 (MP 22.416). BRIDGE OVER POOR FORK OF CUMBERLAND RIVER.BRIDGE REPAIRS EXPANSION JOINTS SYP NO. 11-10047.00.

GEOGRAPHIC COORDINATES LATITUDE 36:55:03.00 LONGITUDE 83:11:02.00

PCN - MB04801191805
FD04 048 0119 B00112N

US 119 (MP 23.491). BRIDGE OVER POOR FORK OF CUMBERLAND RIVER.BRIDGE REPAIRS EXPANSION JOINTS SYP NO. 11-10047.00.

GEOGRAPHIC COORDINATES LATITUDE 36:55:30.00 LONGITUDE 83:10:01.00

PCN - MB04801191806
FD04 048 0119 B00113N

US 119 (MP 23.704). BRIDGE OVER POOR FORK OF CUMBERLAND RIVER.BRIDGE REPAIRS EXPANSION JOINTS SYP NO. 11-10047.00.

GEOGRAPHIC COORDINATES LATITUDE 36:55:31.00 LONGITUDE 83:09:47.00

PCN - MB04801191807
FD04 048 0119 B00114N

US 119 (MP 25.303). BRIDGE OVER POOR FORK OF CUMBERLAND RIVER.BRIDGE REPAIRS EXPANSION JOINTS SYP NO. 11-10047.00.

GEOGRAPHIC COORDINATES LATITUDE 36:56:09.00 LONGITUDE 83:08:16.00

PCN - MB04801191808
FD04 048 0119 B00115N

US 119 (MP 25.482). BRIDGE OVER POOR FORK OF CUMBERLAND RIVER.BRIDGE REPAIRS EXPANSION JOINTS SYP NO. 11-10047.00.

GEOGRAPHIC COORDINATES LATITUDE 36:56:15.00 LONGITUDE 83:08:06.00

PCN - MB04801191809
FD04 048 0119 B00116N

US 119 (MP 27.217). BRIDGE OVER POOR FORK OF CUMBERLAND RIVER.BRIDGE REPAIRS EXPANSION JOINTS SYP NO. 11-10047.00.

GEOGRAPHIC COORDINATES LATITUDE 36:56:45.00 LONGITUDE 83:06:23.00

PCN - MB04801191810
FD04 048 0119 B00117N

US 119 (MP 27.654). BRIDGE OVER POOR FORK OF CUMBERLAND RIVER.BRIDGE REPAIRS EXPANSION
JOINTS SYP NO. 11-10047.00.
GEOGRAPHIC COORDINATES LATITUDE 36:56:48.00 LONGITUDE 83:05:55.00

PCN - MB04801191811
FD04 048 0119 B00118N

US 119 (MP 28.394). BRIDGE OVER POOR FORK OF CUMBERLAND RIVER.BRIDGE REPAIRS EXPANSION
JOINTS SYP NO. 11-10047.00.
GEOGRAPHIC COORDINATES LATITUDE 36:56:56.00 LONGITUDE 83:05:08.00

PCN - MB04801191812
FD04 048 0119 B00119N

US 119 (MP 28.769). BRIDGE OVER POOR FORK OF CUMBERLAND RIVER.BRIDGE REPAIRS EXPANSION
JOINTS SYP NO. 11-10047.00.
GEOGRAPHIC COORDINATES LATITUDE 36:57:02.00 LONGITUDE 83:04:44.00

PCN - MB04801191813
FD04 048 0119 B00120N

US 119 (MP 29.751). BRIDGE OVER POOR FORK OF CUMBERLAND RIVER.BRIDGE REPAIRS EXPANSION
JOINTS SYP NO. 11-10047.00.
GEOGRAPHIC COORDINATES LATITUDE 36:57:33.00 LONGITUDE 83:03:53.00

PCN - MB04801191814
FD04 048 0119 B00121N

US 119 (MP 31.152). BRIDGE OVER POOR FORK OF CUMBERLAND RIVER.BRIDGE REPAIRS EXPANSION
JOINTS SYP NO. 11-10047.00.
GEOGRAPHIC COORDINATES LATITUDE 36:57:57.00 LONGITUDE 83:02:30.00

PCN - MB04801191815
FD04 048 0119 B00122N

US 119 (MP 31.892). BRIDGE OVER POOR FORK OF CUMBERLAND RIVER.BRIDGE REPAIRS EXPANSION
JOINTS SYP NO. 11-10047.00.
GEOGRAPHIC COORDINATES LATITUDE 36:58:02.00 LONGITUDE 83:01:41.00

PCN - MB04801191816
FD04 048 0119 B00123N

US 119 (MP 33.325). BRIDGE OVER POOR FORK OF CUMBERLAND RIVER.BRIDGE REPAIRS EXPANSION
JOINTS SYP NO. 11-10047.00.
GEOGRAPHIC COORDINATES LATITUDE 36:58:22.00 LONGITUDE 83:00:16.00

PCN - MB04801191817
FD04 048 0119 B00124N

US 119 (MP 33.725). BRIDGE OVER POOR FORK OF CUMBERLAND RIVER.BRIDGE REPAIRS EXPANSION
JOINTS SYP NO. 11-10047.00.
GEOGRAPHIC COORDINATES LATITUDE 36:58:19.00 LONGITUDE 82:59:50.00

PCN - MB04801191818
FD04 048 0119 B00126N

US 119 (MP 34.846). BRIDGE OVER KY 160 AND LOONEY CREEK.BRIDGE REPAIRS EXPANSION JOINTS SYP
NO. 11-10047.00.
GEOGRAPHIC COORDINATES LATITUDE 36:58:27.00 LONGITUDE 82:58:41.00

PCN - MB04801191819
FD04 048 0119 B00107N

US 119 (MP 35.611). BRIDGE OVER POOR FORK OF CUMBERLAND RIVER.BRIDGE REPAIRS EXPANSION
JOINTS SYP NO. 11-10047.00.
GEOGRAPHIC COORDINATES LATITUDE 36:59:00.00 LONGITUDE 82:58:16.00

PCN - MB04801191820
FD04 048 0119 B00162N

US 119 (MP 37.269). BRIDGE OVER POOR FORK OF CUMBERLAND RIVER.BRIDGE REPAIRS EXPANSION
JOINTS SYP NO. 11-10047.00.
GEOGRAPHIC COORDINATES LATITUDE 36:59:24.00 LONGITUDE 82:56:42.00

PCN - MB04801191821
FD04 048 0119 B00163N

US 119 (MP 37.521). BRIDGE OVER POOR FORK OF CUMBERLAND RIVER.BRIDGE REPAIRS EXPANSION
JOINTS SYP NO. 11-10047.00.
GEOGRAPHIC COORDINATES LATITUDE 36:59:29.00 LONGITUDE 82:56:27.00

PCN - MB04801191822
FD04 048 0119 B00164N

US 119 (MP 37.801). BRIDGE OVER POOR FORK OF CUMBERLAND RIVER.BRIDGE REPAIRS EXPANSION
JOINTS SYP NO. 11-10047.00.
GEOGRAPHIC COORDINATES LATITUDE 36:59:36.00 LONGITUDE 82:56:11.00

PCN - MB04801191823
FD04 048 0119 B00165N

US 119 (MP 38.089). BRIDGE OVER POOR FORK OF CUMBERLAND RIVER.BRIDGE REPAIRS EXPANSION
JOINTS SYP NO. 11-10047.00.
GEOGRAPHIC COORDINATES LATITUDE 36:59:44.00 LONGITUDE 82:55:55.00

PCN - MB04801191824
FD04 048 0119 B00161N

US 119 (MP 38.439). BRIDGE OVER POOR FORK OF CUMBERLAND RIVER.BRIDGE REPAIRS EXPANSION
JOINTS SYP NO. 11-10047.00.
GEOGRAPHIC COORDINATES LATITUDE 36:59:48.00 LONGITUDE 82:55:32.00

PCN - MB04801191825
FD04 048 0119 B00160N

US 119 (MP 39.068). BRIDGE OVER POOR FORK OF CUMBERLAND RIVER.BRIDGE REPAIRS EXPANSION
JOINTS SYP NO. 11-10047.00.
GEOGRAPHIC COORDINATES LATITUDE 36:59:58.00 LONGITUDE 82:54:54.00

COMPLETION DATE(S):

COMPLETED BY 11/15/2019

APPLIES TO ENTIRE CONTRACT

CONTRACT NOTES

PROPOSAL ADDENDA

All addenda to this proposal must be applied when calculating bid and certified in the bid packet submitted to the Kentucky Department of Highways. Failure to use the correct and most recent addenda may result in the bid being rejected.

BID SUBMITTAL

Bidder must use the Department's electronic bidding software. The Bidder must download the bid file located on the Bid Express website (www.bidx.com) to prepare a bid packet for submission to the Department. The bidder must submit electronically using Bid Express.

JOINT VENTURE BIDDING

Joint venture bidding is permissible. All companies in the joint venture must be prequalified in one of the work types in the Qualifications for Bidders for the project. The bidders must get a vendor ID for the joint venture from the Division of Construction Procurement and register the joint venture as a bidder on the project. Also, the joint venture must obtain a digital ID from Bid Express to submit a bid. A joint bid bond of 5% may be submitted for both companies or each company may submit a separate bond of 5%.

UNDERGROUND FACILITY DAMAGE PROTECTION

The contractor shall make every effort to protect underground facilities from damage as prescribed in the Underground Facility Damage Protection Act of 1994, Kentucky Revised Statute KRS 367.4901 to 367.4917. It is the contractor's responsibility to determine and take steps necessary to be in compliance with federal and state damage prevention directives. When prescribed in said directives, the contractor shall submit Excavation Locate Requests to the Kentucky Contact Center (KY811) via web ticket entry. The submission of this request does not relieve the contractor from the responsibility of contacting non-member facility owners, whom shall be contacted through their individual Protection Notification Center. Non-compliance with these directives can result in the enforcement of penalties.

REGISTRATION WITH THE SECRETARY OF STATE BY A FOREIGN ENTITY

Pursuant to KRS 176.085(1)(b), an agency, department, office, or political subdivision of the Commonwealth of Kentucky shall not award a state contract to a person that is a foreign entity required by [KRS 14A.9-010](#) to obtain a certificate of authority to transact business in the Commonwealth ("certificate") from the Secretary of State under [KRS 14A.9-030](#) unless the person produces the certificate within fourteen (14) days of the bid or proposal opening. If the foreign entity is not required to obtain a certificate as provided in [KRS 14A.9-010](#), the foreign entity should identify the applicable exception. Foreign entity is defined within [KRS 14A.1-070](#).

For all foreign entities required to obtain a certificate of authority to transact business in the Commonwealth, if a copy of the certificate is not received by the contracting agency within the time frame identified above, the foreign entity's solicitation response shall be deemed non-responsive or the awarded contract shall be cancelled.

Businesses can register with the Secretary of State at <https://secure.kentucky.gov/sos/ftbr/welcome.aspx>.

SPECIAL NOTE FOR PROJECT QUESTIONS DURING ADVERTISEMENT

Questions about projects during the advertisement should be submitted in writing to the Division of Construction Procurement. This may be done by fax (502) 564-7299 or email to kytc.projectquestions@ky.gov. The Department will attempt to answer all submitted questions. The Department reserves the right not to answer if the question is not pertinent or does not aid in clarifying the project intent.

The deadline for posting answers will be 3:00 pm Eastern Daylight Time, the day preceding the Letting. Questions may be submitted until this deadline with the understanding that the later a question is submitted, the less likely an answer will be able to be provided.

The questions and answers will be posted for each Letting under the heading "Questions & Answers" on the Construction Procurement website (www.transportation.ky.gov/contract). The answers provided shall be considered part of this Special Note and, in case of a discrepancy, will govern over all other bidding documents.

HARDWOOD REMOVAL RESTRICTIONS

The US Department of Agriculture has imposed a quarantine in Kentucky and several surrounding states, to prevent the spread of an invasive insect, the emerald ash borer. Hardwood cut in conjunction with the project may not be removed from the state. Chipping or burning on site is the preferred method of disposal.

INSTRUCTIONS FOR EXCESS MATERIAL SITES AND BORROW SITES

Identification of excess material sites and borrow sites shall be the responsibility of the Contractor. The Contractor shall be responsible for compliance with all applicable state and federal laws and may wish to consult with the US Fish and Wildlife Service to seek protection under Section 10 of the Endangered Species Act for these activities.

ACCESS TO RECORDS

The contractor, as defined in KRS 45A.030 (9) agrees that the contracting agency, the Finance and Administration Cabinet, the Auditor of Public Accounts, and the Legislative Research Commission, or their duly authorized representatives, shall have access to any books, documents, papers, records, or other evidence, which are directly pertinent to this contract for the purpose of financial audit or program review. Records and other prequalification information confidentially

disclosed as part of the bid process shall not be deemed as directly pertinent to the contract and shall be exempt from disclosure as provided in KRS 61.878(1)(c). The contractor also recognizes that any books, documents, papers, records, or other evidence, received during a financial audit or program review shall be subject to the Kentucky Open Records Act, KRS 61.870 to 61.884.

In the event of a dispute between the contractor and the contracting agency, Attorney General, or the Auditor of Public Accounts over documents that are eligible for production and review, the Finance and Administration Cabinet shall review the dispute and issue a determination, in accordance with Secretary's Order 11-004.

April 30, 2018

SPECIAL NOTE FOR RECIPROCAL PREFERENCE

RECIPROCAL PREFERENCE TO BE GIVEN BY PUBLIC AGENCIES TO RESIDENT BIDDERS

By reference, KRS 45A.490 to 45A.494 are incorporated herein and in compliance regarding the bidders residency. Bidders who want to claim resident bidder status should complete the Affidavit for Claiming Resident Bidder Status along with their bid in the electronic bidding software. Submittal of the Affidavit should be done along the bid in Bid Express.

April 30, 2018

SPECIAL NOTE FOR BRIDGE CLEANING AND PREVENTIVE MAINTENANCE

1. DESCRIPTION. Perform all work in accordance with the Kentucky Transportation Cabinet, Department of Highway's 2012 Standard Specification for Road and Bridge Construction applicable Supplemental Specifications, Standard Drawings, this Note and Attached Detailed Drawings. Section references are to the Standard Specifications. This work consists of the following: (1) Furnish all labor, materials, tools, and equipment; (2) All items included in Bridge Cleaning and Preventive Maintenance (3) Maintain and control traffic; (4) All other work required for this contract.

2. SUBMITTALS

The Contractor shall comply with the submittal requirements detailed in Section 108 of the Standard Specifications for Road and Bridge Construction (Current Edition) and submit the following **written** items to the Project Engineer **14 days** prior to the Pre-Construction Conference:

- A. A detailed Progress of Work Schedule.
- B. Traffic Control Plan.
- C. Manufacturers' recommended Film Thickness and application conditions for the concrete coating system to be used.
- D. Manufactures' specification and recommendations for concrete sealant to be used on bridge deck.

All submittals must be received, accepted and/or approved by the KYTC Engineer prior to beginning any work.

3. MATERIALS.

A. Wash Water

Use clean potable water for all pressure washing.

B. Concrete Coatings (End Bent, Abutment and Pier Caps)

Use one of the coatings from the following manufactures:

Manufacture	Prime Coat	Finish Coat
Sherwin Williams	Macropoxy 646	Acrolon 218 HS
PPG	Amberlock 2	Devoe Devflex
Carboline	Carboguard 890	Carbothane 133 HB
Tnemec	Elastogrip 151	EnviroCrete 15

C. Bearing Lubricant

Use one of the lubricants from the following manufactures:

Manufacture	Lubricant
Bostik Inc.,	Never Seez - Mariner's Choice
Mobil Oil	Mobil Centaur Moly NLGI Grades 1 or 2
Certified Labs	Premalube #1 WG

D. Rust Inhibitor

Use the following rust inhibitor:

Manufacture	Rust Inhibitor
Rhomar Inc.	Black Max

E. Concrete Sealant (Bridge Deck and Parapets)

Product	Supplier
Protectosil BHN	Evonik Industries
Protectosil 300	Evonik Industries
TK-590-40 Tri-Silane 40%	TK Products
Certivex Penseal 244 O/W 80	Vexcon
Master Protect H 440 VT	BASF
(formerly Hydrozo Clear 40 VOC)	
SW-244-100 DOT	Chemical Products Industries, Inc.
TK-590-1 MS Tri-Silane	TK Products

3. CONSTRUCTION.

A. Bridge Cleaning.

All debris shall be removed from the bridge components. See attached detailed drawings for each bridge addressing components having debris removal. Equipment for removing debris from the bridge components shall be determined by the Contractor, subject to the approval of the Engineer. The Contractor shall prevent any debris from entering any body of water, bridge drainage system, or traffic lanes. All debris removed shall be disposed of in a suitable off-site disposal facility. Prior to all cleaning work, the Contractor shall confirm that any bridge drainage system is not blocked by un-removable debris. A blocked drainage system is considered to be one from which debris cannot be removed using the means specified in this note. If the Engineer has been notified, and concurs that the drainage system is blocked prior to performing other cleaning work, then proceed at the direction of the engineer. If the Contractor does not inspect the bridge drainage system and notify the engineer prior to beginning work any blocked drains will be considered to be the result of the Contractor's operations, and all clearing and cleaning of the drainage system shall be done as part of the work of the specification. All vegetation present at areas of the bridge that are to be addressed in this proposal shall be removed as determined by the Engineer. **All cost to complete Debris Removal, Clean Deck Drains and Remove Vegetation shall as specified shall be included in the Lump Sum price for "Bridge Cleaning".**

B. Stratified and Pack Rust Removal.

Stratified and pack rust shall be removed from all bearing devices and steel members from the end of beams. All existing bearing lubrication shall be removed. See attached detailed drawings for each bridge showing location and quantity of the bearing devices. Hand tools including wire brushes, scrapers or impact devices (hand hammers or power chisels) are to be used for removing stratified and pack rust. All surfaces to have stratified and pack rust removed shall be cleaned to an SSPC SP-2 level. All debris collected shall be disposed of in a suitable off-site disposal facility. **All cost to complete Stratified, Pack Rust Removal and removal of existing bearing lubricant shall be considered incidental to the unit price bid for "Lubricate Bearing".**

C. Pressure Washing.

Specified bridge components shall be pressure washed (for deck pressure washing see section F). See attached detailed drawings for each bridge addressing components to be pressure washed. All equipment for pressure washing shall be operated at a minimum pressure of up 4,000 psi with 0 degree spinner tip and/or fan tips as determined by the engineer at the working location with a minimum flow rate of 3.5 gal/minute provided that these pressures do not damage any components of the structure. Pressure and flow rates shall be reduced to a level satisfactory to the Engineer should any damage occur due to power washing procedures. Pressure washing shall be operated at distance of approximately six inches from and perpendicular to the surface. All pressure washing wands shall be equipped with a gauge to accurately determine the amount pressure used. Pressure washing of any bridge element will proceed from top of wash area to bottom of wash area. Wash water will not be released to a bridge element previously washed. Perform all pressure washing at temperatures above 40 degrees Fahrenheit. **All cost to complete Pressure Washing as specified shall be included in the Lump Sum price for Lump Sum price for “Bridge Cleaning”.**

D. Concrete Coatings Application.

All abutment, end bent and pier caps, pedestals, end bent back walls and parapet walls including the abutment and end bent wing walls shall have concrete coating applied to as specified after debris removal and power washing. Use compressed air to remove any loose debris from the surfaces that are to be coated after power washing. See concrete coating diagram. All coatings shall be applied within manufacturers recommended dry film thickness range. Comply with KYTC “Standard Specifications for Road and Bridge Construction” Section 614.03.02 and coatings supplier recommended conditions for application. Allow the surfaces to be coated to dry before any coating is applied. The coating must be applied to a clean and dry surface. All coating application shall be executed using brushes, rollers, etc. No spray application will be permitted. The Department requires acceptance testing of samples obtained on a per-lot basis per-shipment. The Division of Materials shall perform acceptance testing. Test samples shall be taken at the Contractor’s paint storage site. Department personnel shall perform sampling. Allow (10) working days for testing and approval of the sampled paint. It is the Contractor’s responsibility to maintain an adequate inventory of approved paint. The Department shall assume no responsibility for lost work due to rejection of paint or approved paint subsequently found to be defective during the application process. Perform all concrete coating application at temperatures above 40 degrees Fahrenheit or in accordance with manufactures specifications.

The finish coat shall be gray and will meet the following values.

	L*	a*	b*
Grey	74.94	- 1.54	3.92

All cost to complete Concrete Coating Application as specified shall be included in the Lump Sum price for “Concrete Coatings”.

Approximate square footage of concrete to have concrete coatings applied for each bridge follows:

048B00110N ~ 1,800 Square Feet	048B00119N ~ 1200 Square Feet
048B00111N ~ 1,000 Square Feet	048B00120N ~ 1000 Square Feet
048B00100N ~ 1600 Square Feet	048B00121N ~ 1600 Square Feet
048B00101N ~ 1600 Square Feet	048B00122N ~ 1100 Square Feet
048B00112N ~ 1900 Square Feet	048B00123N ~ 1800 Square Feet
048B00113N ~ 1600 Square Feet	048B00124N ~ 2,100 Square Feet
048B00114N ~ 1600 Square Feet	048B00126N ~ 3700 Square Feet
048B00115N ~ 1700 Square Feet	048B00107N ~ 3300 Square Feet
048B00116N ~ 1200 Square Feet	048B00163N ~ 2600 Square Feet
048B00117N ~ 1300 Square Feet	048B00165N ~ 2100 Square Feet
048B00118N ~ 1000 Square Feet	

The square footage listed for each bridge is for informational purposes only.

E. Rust Inhibitor Application.

After removing debris, rust and washing apply a protective coating to the rusted areas of the structural steel within 4 feet from end of beams, See detailed drawing for each structure. The coating should be applied all **steel members** (Beams, Diaphragms and Stiffeners). See attached detailed drawings for locations of specified work for each structure. **All cost to complete Rust Inhibitor Application shall be considered incidental to the unit price bid for "Lubricate Bearing"**.

F. Bearing Lubrication Application.

Bearing devices shall be lubricated as specified after all stratified rust and pack rust is removed and power washing is complete, bearing devices shall have lubricant applied to all surfaces of the bearing including bearing plates and points of movement. See attached detailed drawings for each bridge showing location and quantity of the bearing devices. Allow bearing devices to dry before lubricant is applied. Perform all bearing lubrication application at temperatures above 40 degrees Fahrenheit or in accordance with manufactures specifications. All cost to complete Bearing Lubrication Application as specified shall be included in the unit price Each for "Lubricate Bearing".

G. Seal Bridge Deck.

Cleaning the Bridge Deck. Dry clean concrete surfaces to remove all loose debris. Remove all visible hydrocarbons from the surface with detergent approved by the manufacturer of the deck sealant. Pressure wash all surfaces to be sealed at 2000 to 3000 psi. Install pressure gauges at each wand to verify pressure. Use 30° fan tip or as recommended by the manufacturer of the deck sealant. Hold pressure washing wand a minimum of 45° from the deck with a maximum stand-off distance of 12 inches. This includes the entire surface area of the bridge deck, interior faces and top of parapet walls including the end bent/abutment wing walls.

Seal the Bridge Deck. All concrete to be sealed must be clean and dry. Monitor weather conditions prior to sealer application. Refer to manufacturer's recommendations for proper ambient conditions. Do not apply sealer if precipitation is anticipated within the time stated by the manufacturer. Allow the deck to dry 24 hours (after washing or rain event) before sealer application. The deck can be reopened to traffic while drying. Sealer must be applied within 48 hours of washing or the deck must be rewashed. Divide the deck into predefined areas of specific square footage to aid in determining usage. Comply with manufacturer's usage recommendation. Using a low pressure pump, apply sealer and spread evenly with broom or squeegee; do not allow pooling to remain. When each predefined area is complete, measure the amount of sealer used to verify proper usage. After sealing, follow manufacturer's recommended cure time before opening to traffic. This includes the entire surface area of the bridge deck, interior faces and top of parapet walls including the end bent/abutment wing walls.

All cost to complete Deck Sealing as specified shall be included in the Lump Sum price for "Seal Bridge Deck".

H. Sequence of Work.

Complete work in the sequence listed below:

1. Debris Removal
2. Stratified Rust Removal
3. Pressure Washing
4. Concrete Coating Application
5. Rust Inhibitor Application
6. Bearing Lubrication Application
7. Bridge Deck Sealing

I. Access.

The Contractor shall provide OSHA compliant safe access for all bridge cleaning and preventive maintenance operations and inspection. Cost to furnish all items for access shall be considered incidental to the contract.

J. Inspection.

The Cabinet will provide inspection for all items required in this contract. Visual inspection will be required upon completion of each work item for each structure component or at the discretion of the Engineer at any time. All visual inspection shall be performed within arm's length distance.

- 1. Debris Removal:** Visual Inspection
- 2. Stratified Rust or Pack Rust Removal:** Visual Inspection and Scraper
Test any surface cleaned to SSPC SP2 will be inspected by a dull scraper test to ascertain adherence of existing coating and a hammer test for tightness of pack rust.
- 3. Power Washing:** Visual Inspection.

4. Concrete Coating:

Prime Coat Application Check for dry film thickness*, and defects in paint
Finish Coat Application Check for dry film thickness*, paint appearance,
color and quality of application.

*Destructive DFTs shall be used. Contractor shall repair all test locations,
cost will be considered incidental to the contract.

5. Rust Inhibitor Application: Visual Inspection

6. Bearing Greasing: Visual Inspection.

7. Sealing the Bridge Deck: Visual Inspection

K. Verifying Field Conditions.

The Contractor shall be familiar with all conditions at each bridge site. The Cabinet will not consider any claims due to the Contractor having not familiarized themselves with requirements of this work.

L. Residual Lead.

Residual lead paint may still be on bridge. The Contractor is advised to take all necessary protective measures including worker safety and environmental regulations when performing surface preparation. The Department will not consider any claims based on residual lead paint.

M. Damage to the structure.

The Contractor shall bear all responsibility and expense for any and all damage to the structure during the repair work, even to the removal and replacement of a fallen span, should the fallen span result from the Contractors actions.

4. MEASUREMENT.

Bridge Cleaning: The Cabinet will measure this item by Lump Sum, completed and accepted.

Concrete Coating: The Cabinet will measure this item by Lump Sum, completed and accepted.

Bearing Lubrication: The Cabinet will measure this item by Each, completed and accepted.

Concrete Sealing. The Department will measure the quantity per square feet of each area restored completed and accepted.

5. PAYMENT.

Bridge Cleaning (24981EC): Payment at the contract unit price for “Lump Sum” is full compensation for Debris Removal, Deck Drain Cleaning, Pressure Washing and all incidental items required to complete this with as specified in this note and attached detailed drawings.

Concrete Coating (24982EC): Payment at the contract unit price for “Lump Sum” is full compensation for applying the concrete coatings and all incidental items required to complete this work as specified in this note and attached detailed drawings.

Bearing Lubrication (24983EC): Payment at the contract unit price “Each” is full compensation for applying bearing lubrication and all incidental items required to complete this work as specified in this note and attached detailed drawings.

Seal Bridge Deck (24439EC). Payment at the contract unit price for lump sum is full compensation for the following: (1) Furnish all labor, materials, tools, and equipment; (2) Clean existing bridge deck; (3) Seal the existing bridge deck; (4) Maintain & control traffic; and, (5) Any other work specified as part of this contract.

SPECIAL NOTE FOR JOINT SEAL REPLACEMENT

- 1. DESCRIPTION.** Perform all work in accordance with the Kentucky Transportation Cabinet, Department of Highway's Standard Specifications for Road and Bridge Construction and applicable Supplemental Specifications (Current Editions), this note and attached detailed drawings. Section references are to the Standard Specifications. This work consists of the following: (1) Furnish all labor, materials, tools, and equipment; (2) Remove existing joint seal; (3) Install joint seal as specified (4) Maintain and control traffic; and (5) Any other work specified as part of this contract.
- 2. MATERIALS.**
 - A. Expansion Joint Seals.**
 - 1" ~ SSI SES-100, Watson Bowman Acme FS-100 or BEJS EMSEAL BEJS-ON-A-Reel.
 - 1 ½" ~ SSI SES 112, Watson Bowman Acme FS-150 or BEJS EMSEAL 1 ½" RJ Watson SF 150.
 - 2" ~ SSI SES-200, Watson Bowman Acme FS-200 or BEJS EMSEAL 2"
 - 2 ½" ~ SSI SES-212, Watson Bowman Acme FS-250 or BEJS EMSEAL 2 ½"
- 3. CONSTRUCTION.**
 - A. Remove Existing Materials.** Remove the existing seal and clean according to section 606.03.11 and as directed by the Engineer. Dispose of all removed material entirely away from the job site. This work is incidental to the contract unit price for "JOINT SEALING".
 - B. New Joint Material.** Use a system listed in 2. Materials to reseal joints. Install as recommended from the manufacture. Provide the engineer with the manufactures documents for installation
 - C. Verifying Field Conditions.** The Contractor shall field verify all joint openings, locations and manufacture before ordering any material. New material that is unsuitable due to variation in existing structure shall be replaced at the Contractors expense.
- 4. MEASUREMENT.**
 - A. Joint Seal Replacement.** The Department will measure the quantity in linear feet from gutter line to gutter line along the centerline of the joint. The Department will not measure the portion of the new seal extending through the barrier. The portion of the joint seal extending through the barriers will be considered incidental.
- 5. PAYMENT.**
 - A. Joint Seal Replacement (23386EC).** - Payment at the contract unit price per linear foot is full compensation for removing specified existing materials, furnishing and installing the new specified system, and all incidental items necessary to complete the work within the specified pay limits as specified by this note and the standard specification.

SPECIAL NOTE FOR REPLACING EXPANSION JOINTS AND/OR INSTALLING ARMORED EDGES FOR CONCRETE ON BRIDGES

1. DESCRIPTION. Perform all work in accordance with the Kentucky Transportation Cabinet, Department of Highway's 2012 Standard Specifications for Road and Bridge Construction and applicable Supplemental Specifications, the Standard Drawings, this Note, and the attached detail drawings. Section references are to the Standard Specifications. This work consists of the following: (1) Furnish all labor, materials, tools, and equipment; (2) Remove existing concrete and expansion joint(s) and/or bridge ends; (3) Install armored edges, modular expansion joint assembly and new concrete as specified and in accordance with the attached detail drawings; (4) Install new joint seals (where required); (5) Maintain and control traffic; and (6) Any other work specified as part of this contract.

2. MATERIALS.

A. Class "M" Concrete. Use either "M1" or "M2". See Section 601.

B. Structural Steel. Use new, commercial grade steel suitable for welding. The Engineer will base acceptance on visual inspection. See attach detailed drawings

C. Stud Anchors. The armored edge stud anchors are 3/4" x 6" embedded stud shear connectors conforming to ASTM A108, Grade 1015

D. Steel Reinforcement. Use Grade 60. See Section 602.

E. Epoxy Bond Coat. See Section 511.

F. Joint Seals.

Pre-compressed Silicon and Hybrid Foam Joint Seals

1 1/2" ~ SSI SES 112, Watson Bowman Acme FS-150 or BEJS EMSEAL 1 1/2"

2" ~ SSI SES-200, Watson Bowman Acme FS-200 or BEJS EMSEAL 2"

2 1/2" ~ SSI SES-212, Watson Bowman Acme FS-250 or BEJS EMSEAL 2 1/2"

4" ~ SSI SES-400, RJ Watson SF-400, Watson Bowman Acme SF-400 or
BEJS EMSEAL (4") or DS Brown V-400. **(Parapet for 4" Strip Seal)**

4" Neoprene Strip Seals.

See Section 807.03.03.

3. EQUIPMENT.

A. Hammer. Provide Power driven hammers lighter than nominal 45 lb. class.

B. Sawing Equipment. Sawing equipment shall be a concrete saw capable of sawing concrete to the specified depth.

C. Hydraulic Impact Equipment. Hydraulic Impact/Skid Steer Type Equipment with a maximum rated striking Energy of 360 ft-lbs are permitted only in areas of concrete removal more than 6 inches away from boundaries of surface areas to remain in service. The Contractor is to provide data information to the engineer on the equipment they wish to utilize to ensure compliance with this note.

4. **CONSTRUCTION.**

- A. Remove Existing Materials.** Remove existing expansion joints, existing modular expansion joint assembly, bridge end armored edges and specified areas of concrete as shown on the attached detailed drawings. Remove debris and/or expansion joint filler as directed by the Engineer. Clean and leave all existing steel reinforcement encountered in place. Damaged steel reinforcement will be repaired/replaced as directed by the Engineer at no additional cost to the Department. Dispose of all removed material entirely away from the job site. This work is incidental to the contract unit price for "Expansion Joint Replacement" or "Armored Edge for Concrete".
- B. Place New Concrete and Armored Edges.** After all specified existing materials have been removed; place new armored edges to match the original grade (See attached detail drawings). Place the new Class "M" concrete to the original grade and finish with broom strokes drawn transversely from curb to curb. All new structural steel shall be cleaned and painted in accordance with requirements of Section 607.03.23, except that surfaces to come in contact with concrete are not to be painted. Blast clean all areas of existing concrete and structural steel to come in contact with new concrete until free of all laitance and deleterious substances immediately prior to the placement of the Class "M" Concrete. The surface areas of existing concrete to come in contact with the new Class "M" Concrete are to be coated with an epoxy bond coat immediately prior to placing new concrete in accordance with Section 511. The interfaces of the new and old concrete shall be as nearly vertical and horizontal as possible. Shop drawings will not be required.
- C. Additional Steel Reinforcement.** Furnish for replacement, as directed by the Engineer, 200 linear feet each joint of #4 steel reinforcing bars in 20' lengths. Place these bars in areas deemed by the Engineer to require additional reinforcement. Field cutting and bending is permitted. Do not place any additional steel reinforcement above the height of the top row of Nelson Studs on the armored edges. Ensure that all exposed steel reinforcement is tied in accordance with Section 602.03.04 prior to pouring the new Class "M" concrete. Deliver unused bars to the Local County Maintenance Barn. Payment will be made in accordance with Section 602.
- D. Stage Construction.** Installation of concrete, armored edges and modular expansion joint assembly in two (or more if specified) stages is necessary. Join the armored edges and modular expansion joint assembly at or near the centerline of the roadway or lane line, field weld and grind smooth.
- E. Joint Seals.** Place joint seals as recommended by the manufacturer. Shop drawings will not be required.
- F. Verifying Field Conditions.** The Contractor shall field verify all joint openings, locations and manufacture before ordering any material. New material that is unsuitable due to variation in existing structure shall be replaced at the Contractors expense.
- G. Approach Pavement Repair.** The Contractor shall repair any and all damage to the approach pavement due to this construction. A new asphalt surface wedge for all approaches to each structure in this project shall be placed and compacted to the satisfaction of the Engineer prior to allowing traffic back onto the structure after each section of the joint is replaced. No additional payment will be allowed for this work, as it will be considered incidental to the pay item "Armored Edge for Concrete".

5. MEASUREMENT.

- A. Expansion Joint Replace 1 ½” In.** The Department will measure the quantity in linear feet from gutter line to gutter line along the centerline of the joint.
- B. Expansion Joint Replace 2” In.** The Department will measure the quantity in linear feet from gutter line to gutter line along the centerline of the joint.
- C. Expansion Joint Replace 2 ½” In.** The Department will measure the quantity in linear feet from gutter line to gutter line along the centerline of the joint.
- D. Expansion Joint Replace 4 In.** The Department will measure the quantity in linear feet from gutter line to gutter line along the centerline of the joint.
- E. Armored Edge for Concrete.** The Department will measure the quantity in linear feet from gutter line to gutter line along the face of the bridge end.
- F. Steel Reinforcement.** See Section 602.

6. PAYMENT.

- A. Expansion Joint Replace 1 ½” In. (03294)** Payment at the contract unit price per linear foot is full compensation for removing specified existing materials, furnishing and installing the new armored edges, concrete, joint seal, and all incidental items necessary to complete the work within the specified pay limits as specified by this note and as shown on the attached detail drawings.
- B. Expansion Joint Replace 2 In. (03295)** Payment at the contract unit price per linear foot is full compensation for removing specified existing materials, furnishing and installing the new armored edges, concrete, joint seal, and all incidental items necessary to complete the work within the specified pay limits as specified by this note and as shown on the attached detail drawings.
- C. Expansion Joint Replace 2 ½” In. (03296)** Payment at the contract unit price per linear foot is full compensation for removing specified existing materials, furnishing and installing the new armored edges, concrete, joint seal, and all incidental items necessary to complete the work within the specified pay limits as specified by this note and as shown on the attached detail drawings.
- D. Expansion Joint Replace 4 In. (03298)** Payment at the contract unit price per linear foot is full compensation for removing specified existing materials, furnishing and installing the new armored edges, concrete, neoprene strip seal, Pre-compressed Silicone and Foam Hybrid Seals and all incidental items necessary to complete the work within the specified pay limits as specified by this note and as shown on the attached detail drawings.
- E. C. Armored Edge for Concrete (03299).** Payment at the contract unit price per linear foot is full compensation for placing new armored edge and any approach pavement repair, traffic striping repair and all incidental items necessary to complete the work within the specified pay limits as specified by this note and as shown on the attached detailed drawings.
- F. Steel Reinforcement (08150).** See Section 602.

Residual lead paint may still be on bridge. The Contractor is advised to take all necessary protective measures including worker safety and environmental regulations. The Department will not consider any claims based on residual lead paint

SPECIAL NOTE FOR MAINTAIN AND CONTROL TRAFFIC

All lane closures on this project shall be in accordance with Kentucky Department of Highways Standard Drawings No. **TTC-100, TTC-110, TTC 115, TTC 135 and the FHWA Manual for Uniform Traffic Control Devices (Current Editions) unless otherwise specified.** Lane closures should be used only when absolutely necessary and kept to the shortest duration possible in order to minimize disruption to the traveling public. No work will be conducted over unprotected traffic at any location. At the discretion of the Engineer, lane closures may be restricted on holiday weekends.

The contractor shall be required to submit in writing, to the department, his complete work schedule 14 days prior to the Pre-Construction Conference. The contractor shall be required to coordinate his efforts with those of any other contractor in the construction area so as to eliminate any lane closures which conflict with this traffic note.

In the event it becomes necessary to make emergency repairs at this project by state forces or by other outside contractors, the (painting) contractor shall agree to alter his work pattern as directed by the engineer so as not to interfere with the emergency work.

The contractor shall be required to furnish all traffic control devices whenever his operations endanger or interfere with vehicular traffic as determined by the engineer. The contractor shall furnish any additional traffic control devices necessary to protect traffic and his workmen. Any costs associated with the added traffic control devices (including arrow boards) shall be incidental to the contract lump sum amount for "maintain and control traffic."

Placement of all devices for lane closures shall start and proceed in the direction of flow of traffic. Removal of devices shall start at the end of the construction area and proceed toward oncoming traffic. The contractor shall provide for the installation of all necessary traffic control devices before beginning work and their immediate removal as soon as work is suspended or completed. During the fully operational periods, when no lane closures are permitted, all equipment shall be totally removed from the job site. Traffic control signs shall be removed or covered (if left in a curb lane).

The contractor's vehicles shall always move with and not across or against the flow of traffic. Vehicles shall enter or leave work areas in a manner that will not be hazardous to or interfere with normal roadway traffic. Vehicles shall not park or stop except within designated work areas.

Personal vehicles shall not be permitted to park within the state right-of-way. The contractor's vehicles shall be prohibited from crossing the roadway and all pedestrian movement of the contractor's personnel on the roadway shall be limited to within the closed work area.

048B00110N, 048B00111N, 048B00101N, 048B00112N, 048B00113N, 048B00114N, 048B00115N, 048B00116N, 048B00117N, 048B00118N, 048B00119N, 048B00120N, 048B00121N, 048B00122N, 048B00123N, 048B00124N, 048B00162N, 048B00163N, 048B00164N, 048B00165N, 048B00161N and 048B00160N

Maintain one usable 12 foot minimum lane on US 119. Flagging or traffic signals shall be used. If traffic signals are used the Contractor shall use flagging to minimize impact on school bus traffic when school is in session. The Contractor shall be responsible for establishing the dates and times when school bus traffic will impact the job site. on Shoulder closures may be used. All lane closures and shoulder closures must be removed when not working. Lane closures for will be permitted to stay in place for the expansion joint replacement work if required for that bridge.

048B00126N and 048B00107N

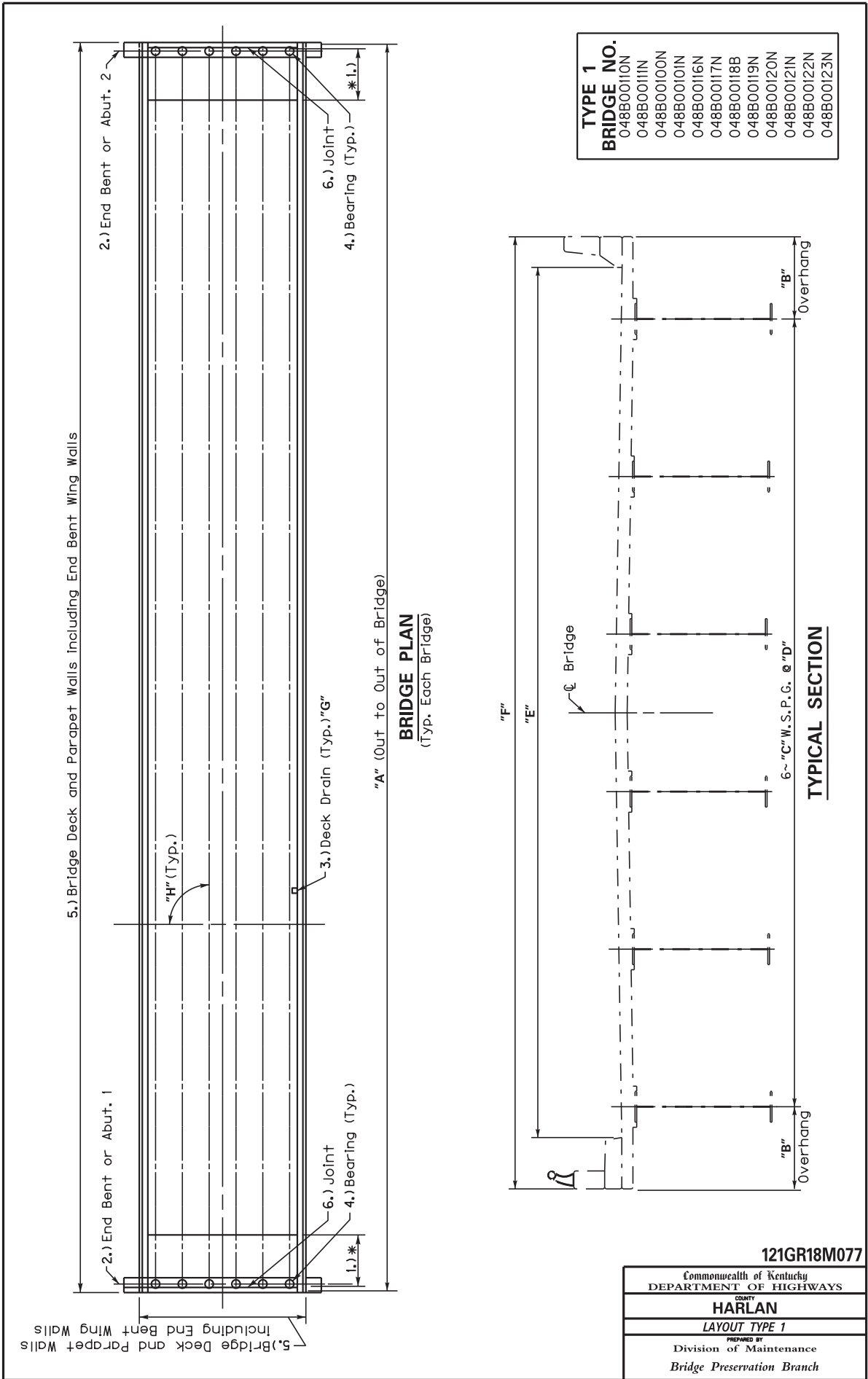
Maintain a 12'-0" usable lane each direction on US 119. Shoulder closures may be used. All lane closures and shoulder closures must be removed when not working. Lane closures for will be permitted to stay in place for the expansion joint replacement work if required for that bridge.

MEASUREMENT.

A. Maintain and Control Traffic: The Department will measure the quantity by Lump Sum, completed and accepted.

PAYMENT.

A. Maintain and Control Traffic (02650). Payment of the contract lump sum amount for "maintain and control traffic" shall be full compensation for all items necessary to maintain and control traffic as specified for this project. All traffic control items shall remain the property of the contractor when the work is complete.



5.) Bridge Deck and Parapet Walls Including End Bent Wing Walls

5.) Bridge Deck and Parapet Walls Including End Bent Wing Walls

BRIDGE PLAN
(Typ. Each Bridge)

TYPICAL SECTION

TYPE 1	
BRIDGE NO.	
048B0010N	
048B0011N	
048B00100N	
048B00101N	
048B00116N	
048B00117N	
048B00118B	
048B00119N	
048B00120N	
048B00121N	
048B00122N	
048B00123N	

121GR18M077

Commonwealth of Kentucky DEPARTMENT OF HIGHWAYS
COUNTY HARLAN
LAYOUT TYPE 1
PREPARED BY Division of Maintenance Bridge Preservation Branch

TYPE 1 ~ BRIDGE INFORMATION TABLE ~ 3 ~ SPAN STEEL GIRDER

BRIDGE NO.	"A"	"B"	"C"	"D"	"E"	"F"	"G"	"H"
048B00110N	367'-0"±	3'-10 1/2"	66"	8'-0"	44'-0"	47'-9"	25	51' 00"00"L T
048B00111N	287'-0"±	3'-10 1/2"	48"	8'-0"	44'-0"	47'-9"	20	30' 00"00"RT
048B00100N	324'-0"±	2'-6"	48"	8'-6"	44'-0"	47'-6"	8	56' 00"00"L T
048B00101N	324'-0"±	2'-6"	48"	8'-6"	44'-0"	47'-6"	8	56' 00"00"RT
048B00116N	268'-0"±	3'-1 1/2"	52"	8'-3"	44'-0"	47'-6"	10	45' 00"00"L T
048B00117N	298'-0"±	3'-1 1/2"	52"	8'-3"	44'-0"	47'-6"	10	50' 00"00"RT
048B00118B	226'-0"±	3'-3"	48"	8'-3"	44'-0"	47'-9"	20	15' 00"00"RT
048B00119N	298'-0"±	3'-3"	48"	8'-3"	44'-0"	47'-9"	7	45' 00"00"RT
048B00120N	246'-0"±	3'-3"	48"	8'-3"	44'-0"	47'-9"	6	30' 00"00"L T
048B00121N	318'-0"±	3'-1 1/2"	60"	8'-3"	44'-0"	47'-6"	10	50' 00"00"L T
048B00122N	246'-0"±	3'-2 1/2"	48"	8'-5"	45'-0"	48'-6"	6	30' 00"00"L T
048B00123N	324'-0"±	3'-1 1/2"	60"	8'-3"	44'-0"	47'-6"	10	55' 00"00"L T

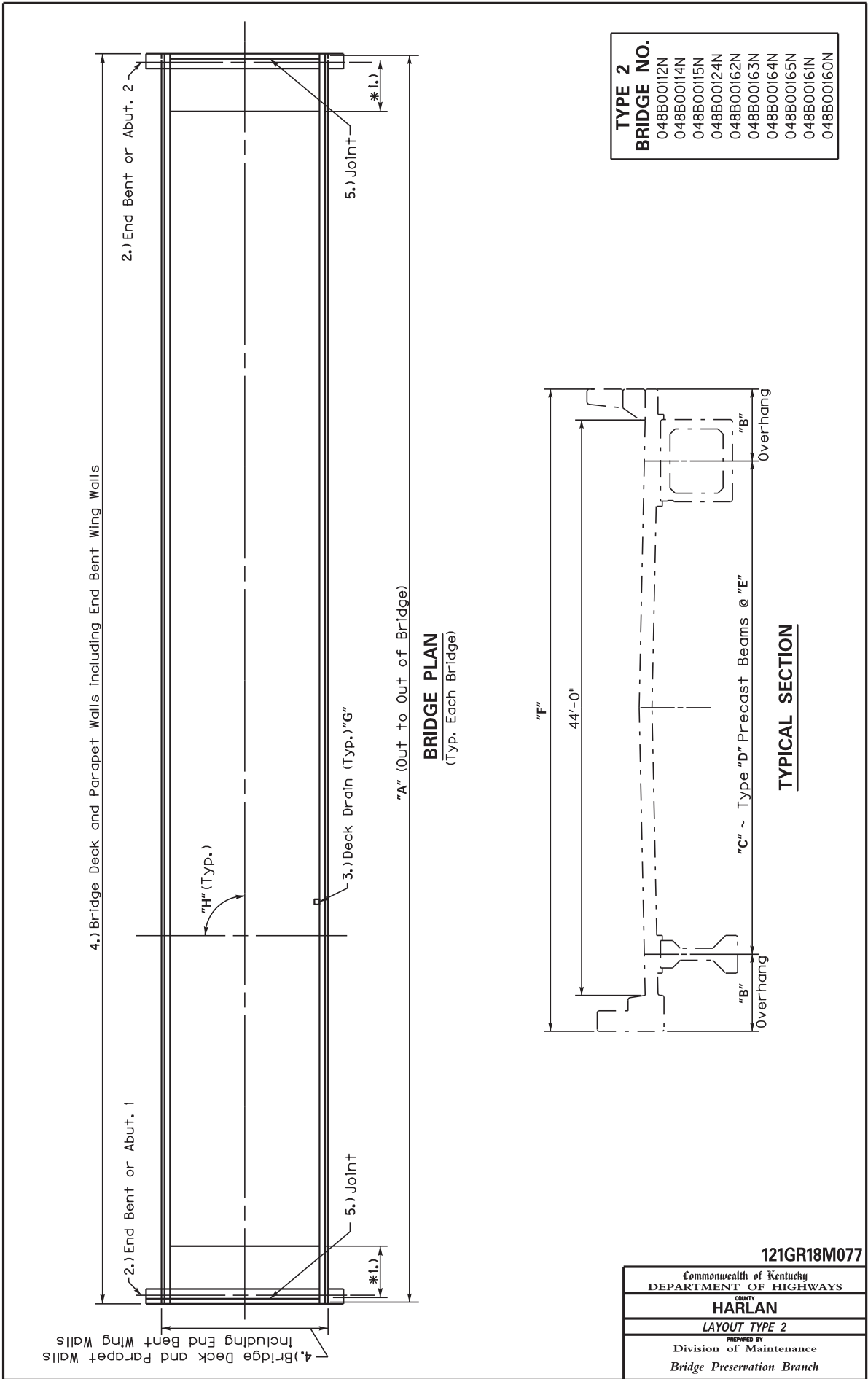
TYPE 1 ~ JOINT DATA

BRIDGE NO.	END BENT/ABUT. 1	END BENT/ABUT. 2
048B00110N	Replace ~ 4"	Replace ~ 2"
048B00111N	Reseal ~ 2"	Replace ~ 4"
048B00100N	Replace ~ 2"	Replace ~ 4"
048B00101N	Reseal ~ 1 1/2"	Replace ~ 4"
048B00116N	Replace ~ 4"	Replace ~ 2"
048B00117N	Clean	Clean
048B00118B	Replace ~ 1 1/2"	Replace ~ 4"
048B00119N	Replace ~ 2"	Replace ~ 4"
048B00120N	Replace ~ 4"	Reseal ~ 1 1/2"
048B00121N	Replace ~ 2 1/2"	Replace ~ 4"
048B00122N	Replace ~ 4"	Replace ~ 2 1/2"
048B00123N	Reseal ~ 2"	Replace ~ 4"

- 1.) * 10'-0"~Remove debris and pressure wash all beam end and diaphragm surfaces in this limit.
* 4'-0"~Apply rust inhibitor to all structural steel in these limits.
 - 2.) Remove debris, pressure wash then apply concrete coatings to surfaces at each end bent, or abutment. See Concrete Coating Diagram.
 - 3.) Remove debris and pressure wash deck drains as shown in bridge plan. See Bridge Information Table, Item 'G' for quantity.
 - 4.) ○ Indicates bearing device. Remove debris, stratified and pack rust, pressure wash and apply lubricant. 12 Each Bridge, total 144. Bearing with with existing lubricant apply shall be have be cleaned and re-lubricated.
 - 5.) Remove debris and pressure wash and then apply sealant to the bridge deck and inside faces and top of parapets the entire length of the bridge including the abutment wingwalls.
 - 6.) Clean: Remove debris and pressure wash joints. See joint data table for bridges to receive this work. See Special note for Bridge Clean and Preventive Maintenance.
- Reseal: Remove existing joint seal and replace. See Joint Data table for bridges to receive this work. See special note for joint seal replacement.
- Replace: Remove existing expansion joint assembly and replace. See Joint Data table for bridges to receive this work. See special note for replacing expansion joints and/or installing armored edges for concrete on bridges.
- See Social Note for Bridge Cleaning and Preventative Maintenance for additional information.

121GR18M077

Commonwealth of Kentucky DEPARTMENT OF HIGHWAYS
COUNTY HARLAN
LAYOUT TYPE 1
PREPARED BY Division of Maintenance Bridge Preservation Branch



TYPE 2	BRIDGE NO.
	048B00112N
	048B00114N
	048B00115N
	048B00124N
	048B00162N
	048B00163N
	048B00164N
	048B00165N
	048B00161N
	048B00160N

BRIDGE PLAN
(Typ. Each Bridge)

TYPICAL SECTION

121GR18M077

Commonwealth of Kentucky DEPARTMENT OF HIGHWAYS
COUNTY HARLAN
LAYOUT TYPE 2
PREPARED BY Division of Maintenance Bridge Preservation Branch

TYPE 2 ~ BRIDGE INFORMATION TABLE ~ 3 SPAN PRECAST BEAMS

BRIDGE NO.	"A"	"B"	"C"	"D"	"E"	"F"	"G"	"H"
048B00112N	234'-0"±	2'-9"	7	4 PCIB	7'-0"	47'-6"	6	37° 30' 00" LT
048B00113N	207'-0"±	Varies	7	3 PCIB	7'-0"	47'-6"	4	26° 00' 00" RT
048B00114N	217'-0"±	2'-9"	7	3 PCIB	7'-0"	47'-6"	4	26° 00' 00" LT
048B00115N	284'-0"±	2'-6"	7	3 PCIB	7'-0"	47'-6"	6	37° 30' 00" RT
048B00124N	130'-0"±	Varies	6	2 PCIB	7'-0"	47'-9"	6	00° 00' 00"
048B00162N	165'-0"±	Varies	6	3 PCIB	8'-3"	47'-3 1/2"	7	15° 00' 00" RT
048B00163N	225'-0"±	Varies	6	3 PCIB	Varies	47'-3 1/2"	11	48° 00' 00" LT
048B00164N	164'-0"±	3'-7 3/4"	6	2 PCIB	8'-0"	47'-3 1/2"	12	10° 00' 00" RT
048B00165N	216'-0"±	Varies	6	3 PCIB	Varies	47'-3 1/2"	10	35° 00' 00" LT
048B00161N	159'-0"±	3'-7 3/4"	6	48' PCBB	8'-0"	47'-3 1/2"	14	15° 00' 00" RT
048B00160N	153'-0"±	3'-7 3/4"	6	3 PCIB	8'-0"	47'-3 1/2"	14	00° 00' 00"

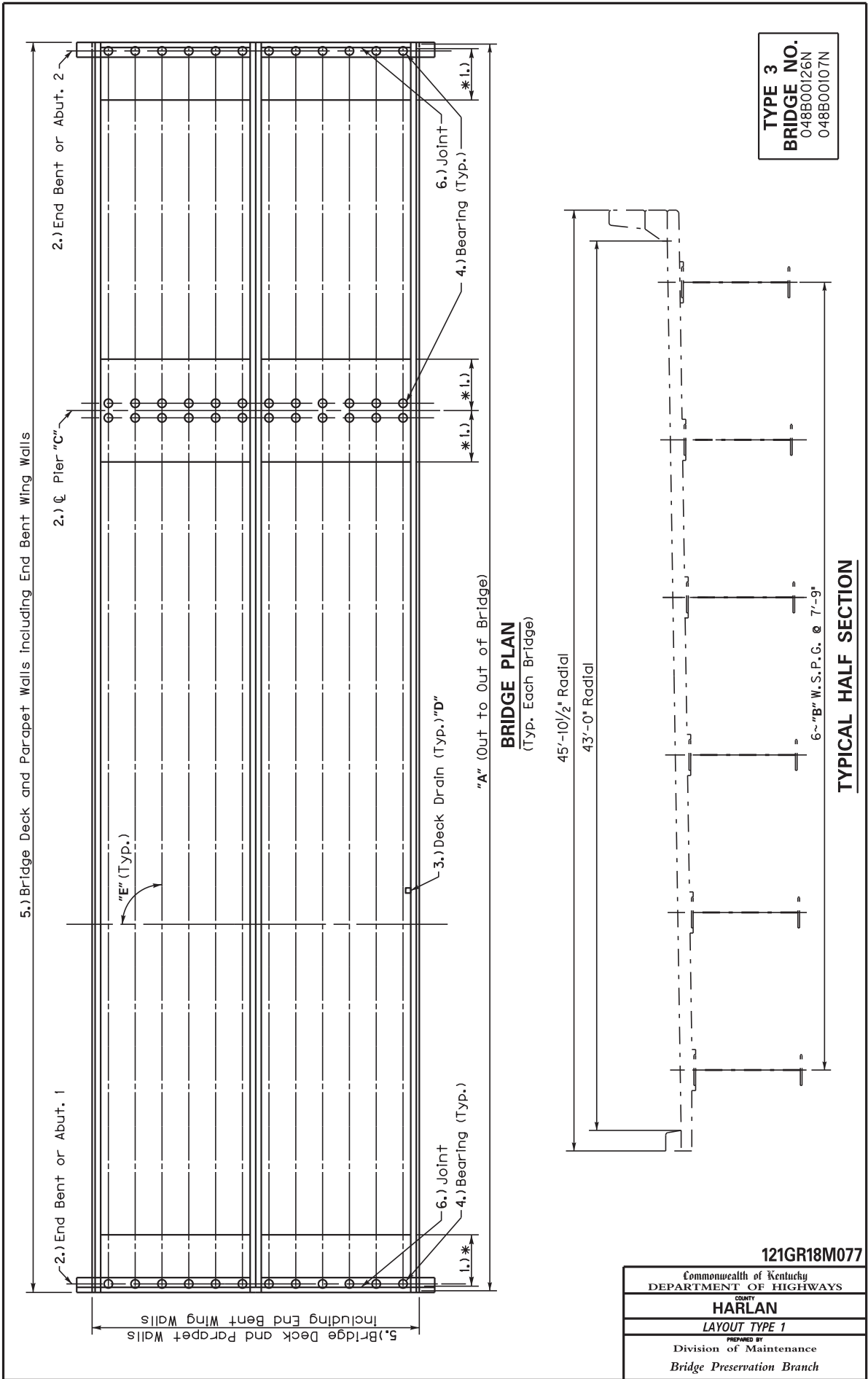
TYPE 2 ~ JOINT DATA

BRIDGE NO.	END BENT/ABUT. 1	END BENT/ABUT. 2
048B00112N	Replace ~ 2"	Replace ~ 2"
048B00113N	Reseal ~ 1"	Reseal ~ 1"
048B00114N	Replace ~ 2"	Replace ~ 2"
048B00115N	Replace ~ 2"	Replace ~ 2"
048B00124N	Replace ~ 1 1/2"	Replace ~ 1 1/2"
048B00162N	N/A	N/A
048B00163N	Replace ~ 2"	Replace ~ 2"
048B00164N	N/A	N/A
048B00165N	Replace ~ 2"	Replace ~ 2"
048B00161N	Clean	Clean
048B00160N	Clean	Clean

- 1.) * 10'-0"~Remove debris and pressure wash all beam end and diaphragm surfaces in this limit.
* 4'-0"~Apply concrete coating to all beam end and diaphragm surfaces in this limit. See Concrete Coating Diagram.
Applies to 048B00112N, 048B00113N, 048B00114N, 048B00115N, 048B00124 and 048B00163N, 048B00165N only.
 - 2.) Remove debris, pressure wash then apply concrete coatings to surfaces at each end bent, or abutment. See Concrete Coating Diagram.
Applies to 048B00112N, 048B00113N, 048B00114N, 048B00115N, 048B00124N, 048B00163N and 048B00165N only.
 - 3.) Remove debris and pressure wash deck drains as shown in bridge plan. See Bridge Information Table, Item "G" for quantity.
 - 4.) Remove debris and pressure wash and then apply sealant to the bridge deck and inside faces and top of parapets the entire length of the bridge including the abutment wingwalls.
 - 5.) Clean: Remove debris and pressure wash joints. See joint data table for bridges to receive this work. See Special Note for Bridge Clean and Preventive Maintenance.
- Reseal: Remove existing joint seal and replace. See Joint Data table for bridges to receive this work. See special note for joint seal replacement.
- Replace: Remove existing expansion joint assembly and replace. See Joint Data table for bridges to receive this work. See special note for replacing expansion joints and/or installing armored edges for concrete on bridges.
- See Special Note for Bridge Cleaning and Preventive Maintenance for additional information.

121GR18M077

Commonwealth of Kentucky DEPARTMENT OF HIGHWAYS
COUNTY HARLAN
LAYOUT TYPE 2
PREPARED BY Division of Maintenance Bridge Preservation Branch



121GR18M077

Commonwealth of Kentucky
DEPARTMENT OF HIGHWAYS

COUNTY
HARLAN

LAYOUT TYPE 1

PREPARED BY
Division of Maintenance
Bridge Preservation Branch

TYPE 3 ~ BRIDGE INFORMATION TABLE

BRIDGE NO.	"A"	"B"	"C"	"D"	"E"
048B00126N	628'-0"±	72'x52'	4	21	Varies
048B00107N	476'-0"±	58'	3	15	Varies

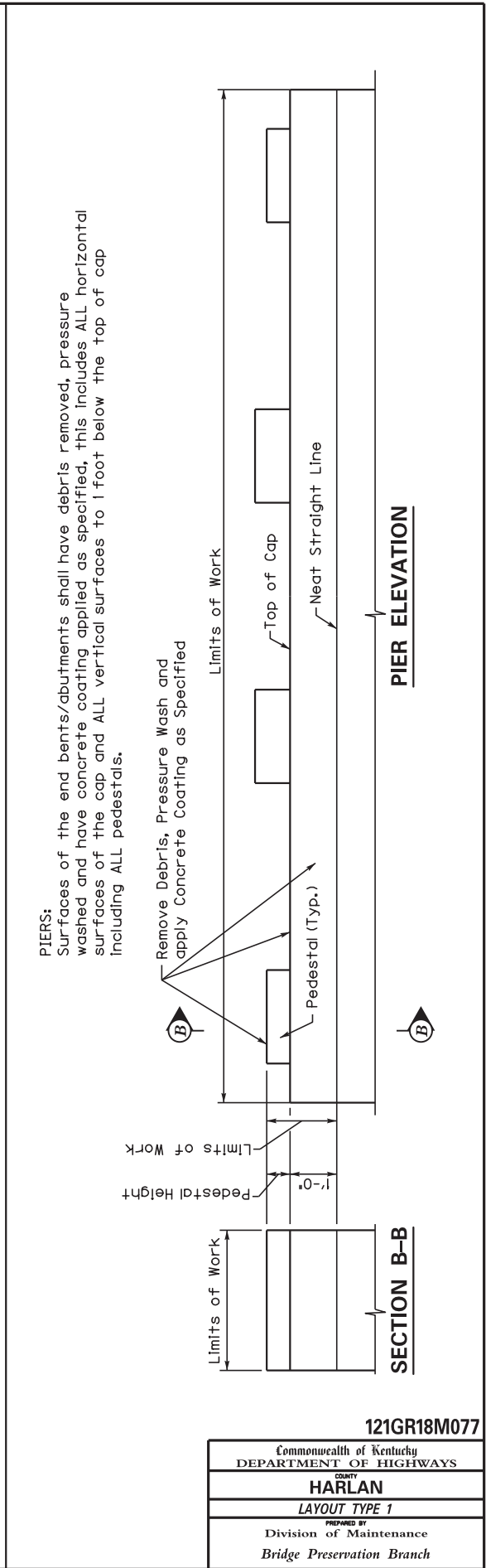
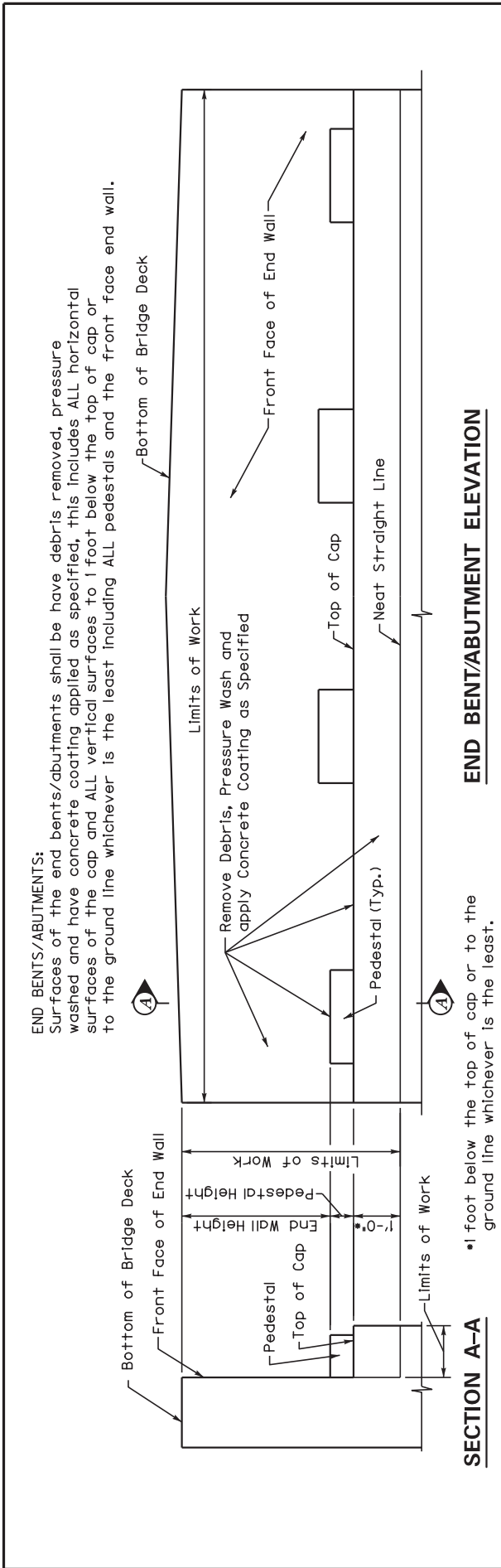
TYPE 3 ~ JOINT DATA

BRIDGE NO.	END BENT/ABUT. 1	PIER	END BENT/ABUT. 2
048B00126N	Clean	Clean	Replace ~ 1/2"
048B00107N	Replace ~ 2"	Replace ~ 4"	Replace ~ 1/2"

- 1.) * 10'-0"~Remove debris and pressure wash all beam end and diaphragm surfaces in this limit.
* 4'-0"~Apply rust inhibitor to all structural steel in these limits.
 - 2.) Remove debris, pressure wash then apply concrete coatings to surfaces at each end bent or abutment and pier. See Concrete Coating Diagram.
 - 3.) Remove debris and pressure wash deck drains as shown in bridge plan. See Bridge Information Table, Item "D" for quantity.
 - 4.) ○ Indicates bearing device. Remove debris, stratified and pack rust, pressure wash and apply lubricant. 48 Each Bridge, Total 96.
 - 5.) Remove debris and pressure wash and then apply sealant to the bridge deck and inside faces and top of parapets the entire length of the bridge including the abutment wingwalls.
 - 6.) Clean: Remove debris and pressure wash joints. See joint data table for bridges to receive this work. See Special note for Bridge Clean and Preventive Maintenance.
- Reseal: Remove existing joint seal and replace. See Joint Data table for bridges to receive this work. See special note for joint seal replacement.
- Replace: Remove existing expansion joint assembly and replace. See Joint Data table for bridges to receive this work. See special note for replacing expansion joints and/or installing armored edges for concrete on bridges.
- See Social Note for Bridge Cleaning and Preventative Maintenance for additional information.

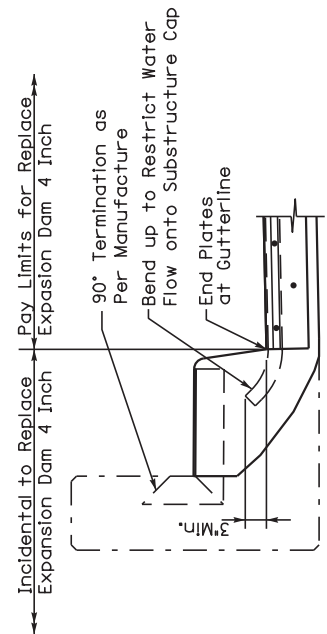
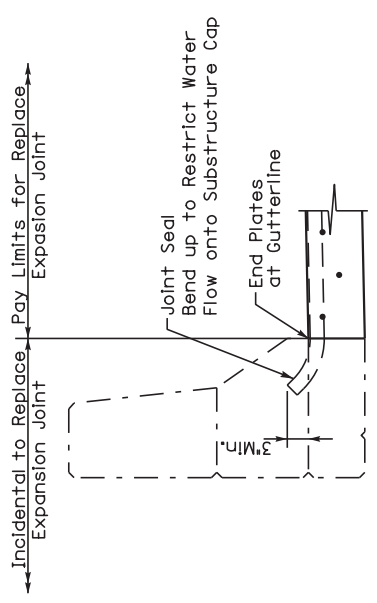
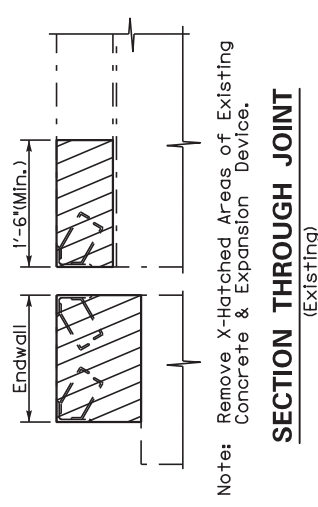
121GR18M077

Commonwealth of Kentucky DEPARTMENT OF HIGHWAYS
COUNTY HARLAN
LAYOUT TYPE 1
PREPARED BY Division of Maintenance Bridge Preservation Branch

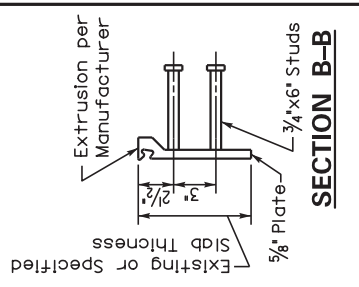
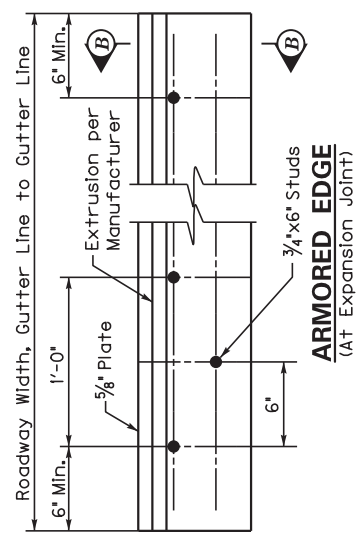
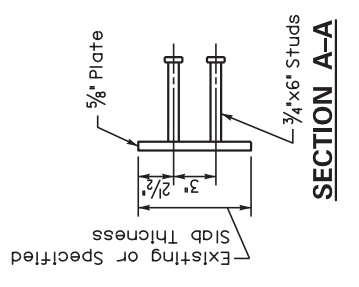
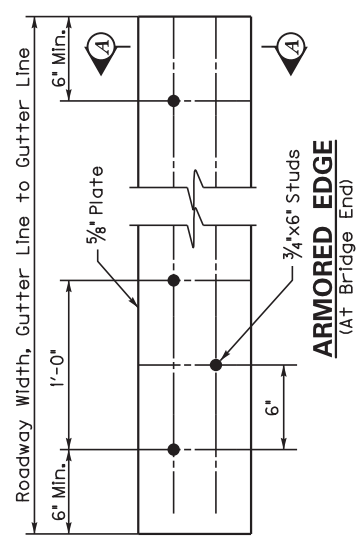
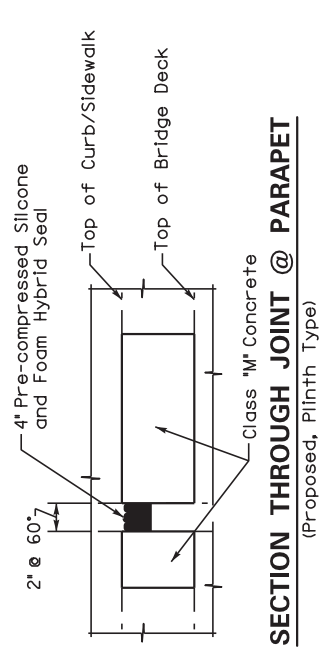
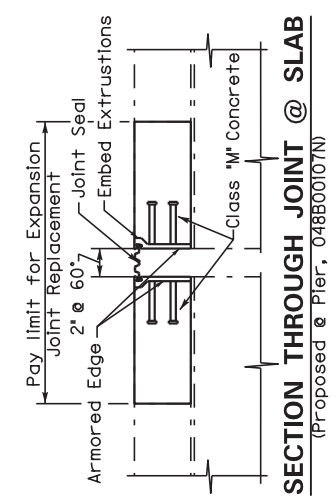
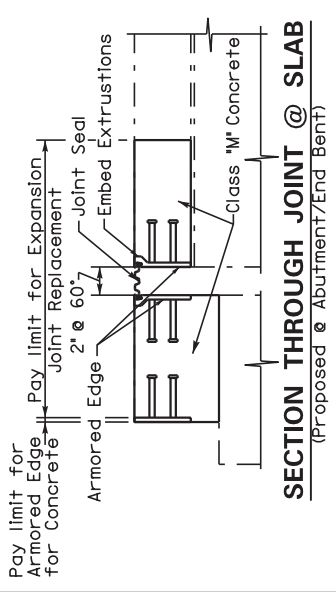


121GR18M077

Commonwealth of Kentucky DEPARTMENT OF HIGHWAYS
COUNTY HARLAN
LAYOUT TYPE 1
PREPARED BY Division of Maintenance Bridge Preservation Branch



Note: See Special Note for Replacing Expansion Dams and/or Installing Armored Edges for Concrete on Bridges



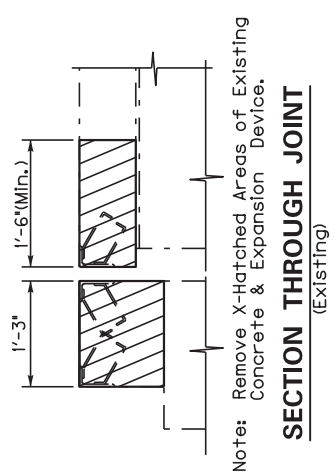
121GR18M077

Commonwealth of Kentucky
DEPARTMENT OF HIGHWAYS

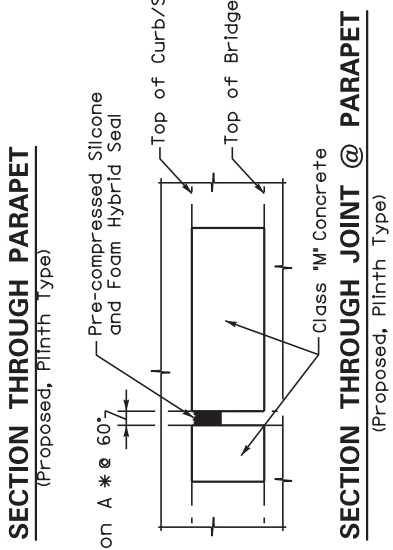
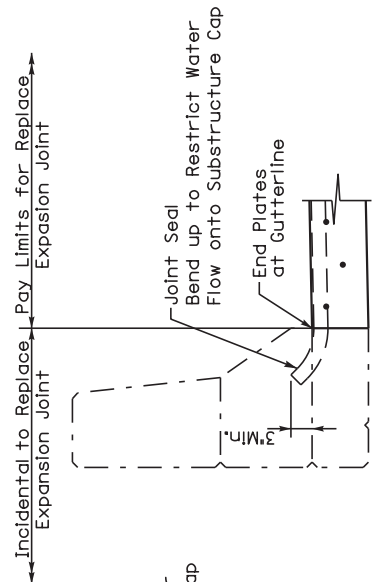
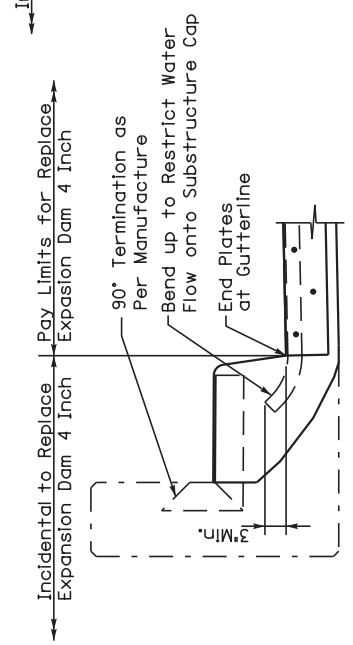
COUNTY
HARLAN

REPLACE EXPANSION JOINT 4"

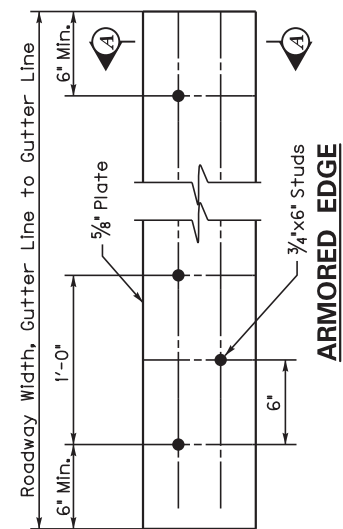
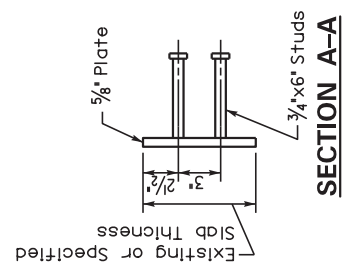
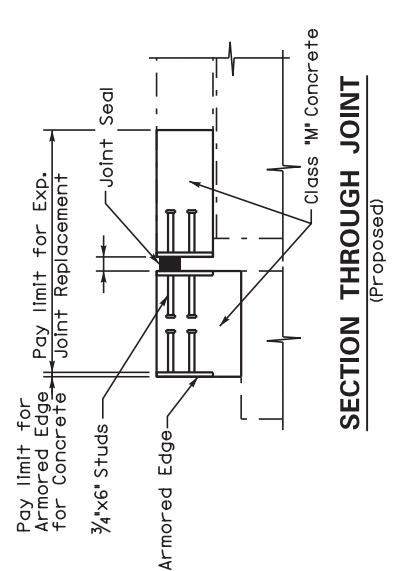
PREPARED BY
Division of Maintenance
Bridge Preservation Branch



Note: Remove X-Hatched Areas of Existing Concrete & Expansion Device.



DIMENSION A	
JOINT SIZE	* @ 60°
1 1/2"	3/4"
2"	2"
2 1/2"	1 1/4"



121GR18M077

Commonwealth of Kentucky DEPARTMENT OF HIGHWAYS
COUNTY HARLAN
REPLACE EXPANSION JOINT 1 1/2"-2 1/2"
PREPARED BY Division of Maintenance Bridge Preservation Branch

Note: See Special Note for Replacing Expansion Dams and/or Installing Armored Edges for Concrete on Bridges

SPECIAL NOTE FOR CONTRACT COMPLETION DATE AND LIQUIDATED DAMAGES ON BRIDGE REPAIR CONTRACTS

- I. COMPLETION DATE.** The Contractor has the option of selecting the starting date for this Contract. Once selected, notify the Department in writing of the date selected at least two weeks prior to beginning work. All work is to be completed by November 15, 2019.

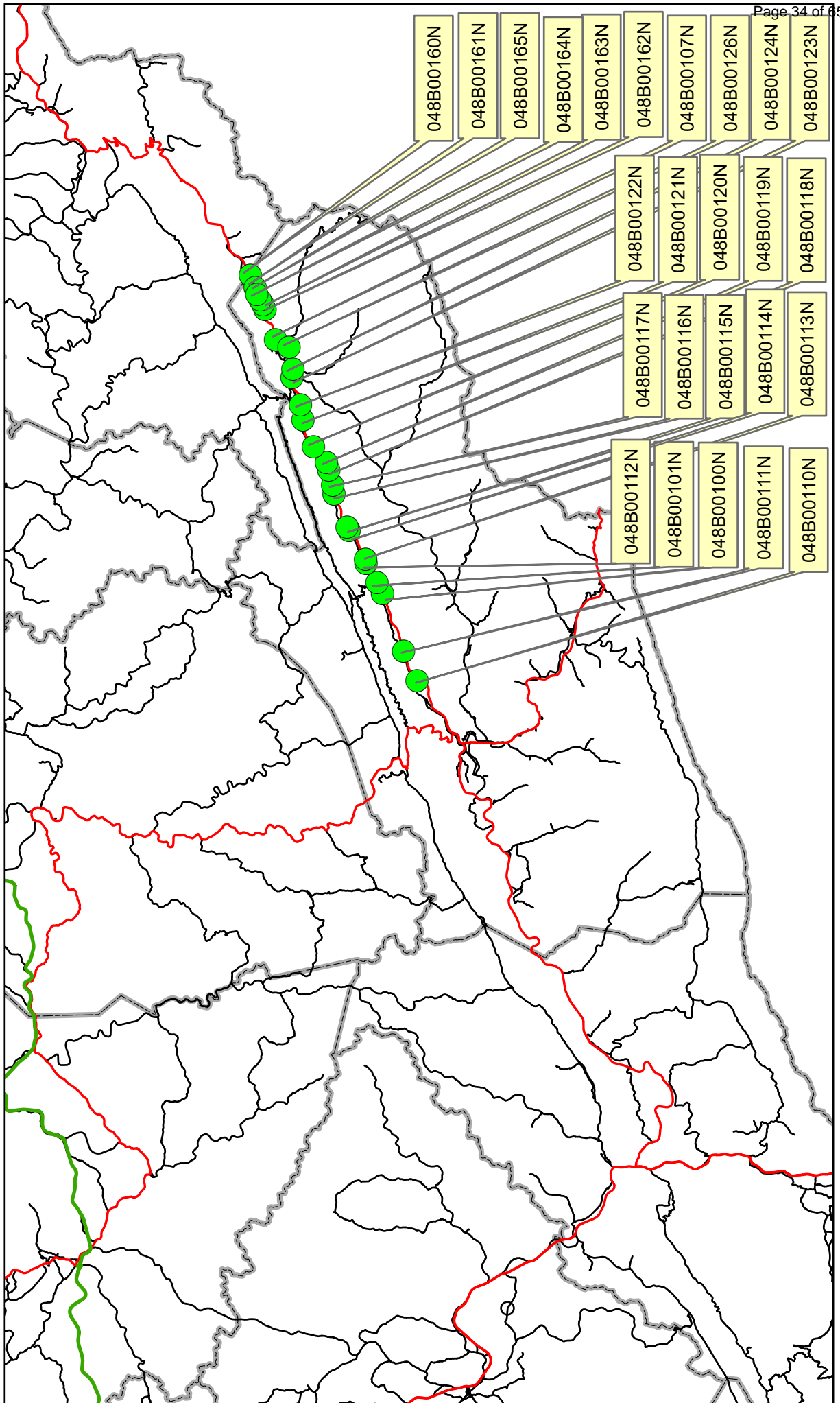
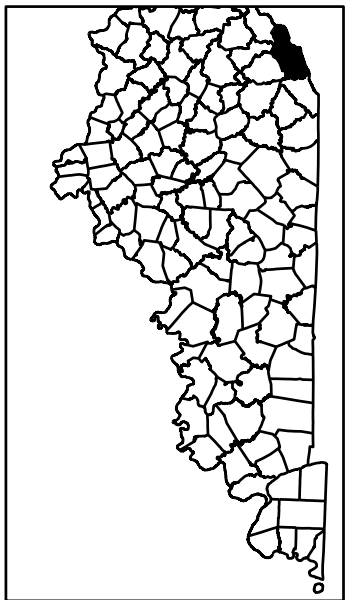
Contrary to Section 108.07.02, the Engineer will begin charging calendar days for a structure on the day the Contractor starts work or sets up traffic control on that particular structure.

- II. LIQUIDATED DAMAGES.** Liquidated damages will be assessed the Contractor in accordance with the Transportation Cabinet, Department of Highway's 2012 Standard Specifications for Road and Bridge Construction, Section 108.09, when the November 15, 2019 date is exceeded.

Contrary to the Standard Specifications, liquidated damages will be assessed the Contractor during the months of December, January, February and March when the contract time has expired on any individual bridge or bridges. Contract time will be charged during these months.

All construction must be completed in accordance with the weather limitations specified in Section 606 and/or Section 601 as applicable. No extension of Contract time will be granted due to inclement weather or temperature limitations that occur due to starting work on the Contract or a structure late in the construction season.

US119 - HARLAN COUNTY



MATERIAL SUMMARY

CONTRACT ID: 182912

048GR18M080-FD04

MB04801191801

US 119 (MP 17.269). POOR FORK OF CUMBERLAND RIVER. BRIDGE REPAIRS EXPANSION JOINTS.

Project Line No	Bid Code	DESCRIPTION	Quantity	Unit
0005	02650	MAINTAIN & CONTROL TRAFFIC - APPLIES TO 048B00110N	1.00	LS
0010	03298	EXPAN JOINT REPLACE 4 IN	70.00	LF
0015	03299	ARMORED EDGE FOR CONCRETE	140.00	LF
0020	08150	STEEL REINFORCEMENT	267.20	LB
0025	02569	DEMOBILIZATION	1.00	LS
0030	24439EC	SEAL BRIDGE DECK	1.00	LS
0035	24982EC	CONCRETE COATING - APPLIES TO 048B00110N	1.00	LS
0040	24981EC	BRIDGE CLEANING - APPLIES TO 048B00110N	1.00	LS
0045	24983EC	BEARING LUBRICATION	12.00	EACH
0050	03295	EXPAN JOINT REPLACE 2 IN	70.00	LF

CONTRACT ID: 182912

048GR18M080-FD04

MB04801191802

US 119 (MP 18.842). BRIDGE OVER POOR FORK OF CUMBERLAND RIVER. BRIDGE REPAIRS EXPANSION JOINTS.

Project Line No	Bid Code	DESCRIPTION	Quantity	Unit
0055	02650	MAINTAIN & CONTROL TRAFFIC - APPLIES TO 048B00111N	1.00	LS
0060	03298	EXPAN JOINT REPLACE 4 IN	50.80	LF
0065	03299	ARMORED EDGE FOR CONCRETE	50.80	LF
0070	08150	STEEL REINFORCEMENT	133.60	LB
0075	08540	JOINT SEALING - 2" SEAL	50.80	LF
0080	24439EC	SEAL BRIDGE DECK	1.00	LS
0085	24981EC	BRIDGE CLEANING - APPLIES TO 048B00111N	1.00	LS
0090	24982EC	CONCRETE COATING - APPLIES TO 048B00111N	1.00	LS
0095	24983EC	BEARING LUBRICATION	12.00	EACH
0100	02569	DEMOBILIZATION	1.00	LS

MATERIAL SUMMARY

CONTRACT ID: 182912

048GR18M080-FD04

MB04801191803

US 119 (MP 21.827). BRIDGE OVER POOR FORK OF CUMBERLAND RIVER. BRIDGE REPAIRS EXPANSION JOINTS.

Project Line No	Bid Code	DESCRIPTION	Quantity	Unit
0105	02650	MAINTAIN & CONTROL TRAFFIC - APPLIES TO 048B00100N	1.00	LS
0110	03295	EXPAN JOINT REPLACE 2 IN	78.70	LF
0115	03298	EXPAN JOINT REPLACE 4 IN	78.70	LF
0120	03299	ARMORED EDGE FOR CONCRETE	157.40	LF
0125	08150	STEEL REINFORCEMENT	267.20	LB
0130	24439EC	SEAL BRIDGE DECK	1.00	LS
0135	24981EC	BRIDGE CLEANING - APPLIES TO 048B00100N	1.00	LS
0140	24982EC	CONCRETE COATING - APPLIES TO 048B00100N	1.00	LS
0145	24983EC	BEARING LUBRICATION	12.00	EACH
0150	02569	DEMOBILIZATION	1.00	LS

CONTRACT ID: 182912

048GR18M080-FD04

MB04801191804

US 119 (MP 22.416). BRIDGE OVER POOR FORK OF CUMBERLAND RIVER. BRIDGE REPAIRS EXPANSION JOINTS.

Project Line No	Bid Code	DESCRIPTION	Quantity	Unit
0155	02650	MAINTAIN & CONTROL TRAFFIC - APPLIES TO 048B00101N	1.00	LS
0160	03298	EXPAN JOINT REPLACE 4 IN	78.70	LF
0165	03299	ARMORED EDGE FOR CONCRETE	78.70	LF
0170	08150	STEEL REINFORCEMENT	133.60	LB
0175	08540	JOINT SEALING - 1.5" SEAL	78.70	LF
0180	24439EC	SEAL BRIDGE DECK	1.00	LS
0185	24981EC	BRIDGE CLEANING - APPLIES TO 048B00101N	1.00	LS
0190	24982EC	CONCRETE COATING - APPLIES TO 048B00101N	1.00	LS
0195	24983EC	BEARING LUBRICATION	12.00	EACH
0200	02569	DEMOBILIZATION	1.00	LS

MATERIAL SUMMARY

CONTRACT ID: 182912

048GR18M080-FD04

MB04801191805

US 119 (MP 23.491). BRIDGE OVER POOR FORK OF CUMBERLAND RIVER. BRIDGE REPAIRS EXPANSION JOINTS.

Project Line No	Bid Code	DESCRIPTION	Quantity	Unit
0205	02650	MAINTAIN & CONTROL TRAFFIC - APPLIES TO 048B00112N	1.00	LS
0210	03295	EXPAN JOINT REPLACE 2 IN	111.00	LF
0215	03299	ARMORED EDGE FOR CONCRETE	111.00	LF
0220	08150	STEEL REINFORCEMENT	267.20	LB
0225	24439EC	SEAL BRIDGE DECK	1.00	LS
0230	24981EC	BRIDGE CLEANING - APPLIES TO 048B00112N	1.00	LS
0235	24982EC	CONCRETE COATING - APPLIES TO 048B00112N	1.00	LS
0240	02569	DEMOBILIZATION	1.00	LS

CONTRACT ID: 182912

048GR18M080-FD04

MB04801191806

US 119 (MP 23.704). BRIDGE OVER POOR FORK OF CUMBERLAND RIVER. BRIDGE REPAIRS EXPANSION JOINTS.

Project Line No	Bid Code	DESCRIPTION	Quantity	Unit
0245	02650	MAINTAIN & CONTROL TRAFFIC - APPLIES TO 048B00113N	1.00	LS
0250	08540	JOINT SEALING - 1" SEAL	98.00	LF
0255	24439EC	SEAL BRIDGE DECK	1.00	LS
0260	24981EC	BRIDGE CLEANING - APPLIES TO 048B00113N	1.00	LS
0265	24982EC	CONCRETE COATING - APPLIES TO 048B00113N	1.00	LS
0270	02569	DEMOBILIZATION	1.00	LS

MATERIAL SUMMARY

CONTRACT ID: 182912

048GR18M080-FD04

MB04801191807

US 119 (MP 25.303). BRIDGE OVER POOR FORK OF CUMBERLAND RIVER. BRIDGE REPAIRS EXPANSION JOINTS.

Project Line No	Bid Code	DESCRIPTION	Quantity	Unit
0275	02650	MAINTAIN & CONTROL TRAFFIC - APPLIES TO 048B00114N	1.00	LS
0280	03295	EXPAN JOINT REPLACE 2 IN	98.00	LF
0285	03299	ARMORED EDGE FOR CONCRETE	98.00	LF
0290	08150	STEEL REINFORCEMENT	267.20	LB
0295	24439EC	SEAL BRIDGE DECK	1.00	LS
0300	24981EC	BRIDGE CLEANING - APPLIES TO 048B00114N	1.00	LS
0305	24982EC	CONCRETE COATING - APPLIES TO 048B00114N	1.00	LS
0310	02569	DEMOBILIZATION	1.00	LS

CONTRACT ID: 182912

048GR18M080-FD04

MB04801191808

US 119 (MP 25.482). BRIDGE OVER POOR FORK OF CUMBERLAND RIVER. BRIDGE REPAIRS EXPANSION JOINTS.

Project Line No	Bid Code	DESCRIPTION	Quantity	Unit
0315	02650	MAINTAIN & CONTROL TRAFFIC - APPLIES TO 048B00115N	1.00	LS
0320	03295	EXPAN JOINT REPLACE 2 IN	111.00	LF
0325	03299	ARMORED EDGE FOR CONCRETE	111.00	LF
0330	08150	STEEL REINFORCEMENT	267.20	LB
0335	24439EC	SEAL BRIDGE DECK	1.00	LS
0340	24981EC	BRIDGE CLEANING - APPLIES TO 048B00115N	1.00	LS
0345	24982EC	CONCRETE COATING - APPLIES TO 048B00115N	1.00	LS
0350	02569	DEMOBILIZATION	1.00	LS

MATERIAL SUMMARY

CONTRACT ID: 182912

048GR18M080-FD04

MB04801191809

US 119 (MP 27.217). BRIDGE OVER POOR FORK OF CUMBERLAND RIVER. BRIDGE REPAIRS EXPANSION JOINTS.

Project Line No	Bid Code	DESCRIPTION	Quantity	Unit
0355	02650	MAINTAIN & CONTROL TRAFFIC - APPLIES TO 048B00116N	1.00	LS
0360	03295	EXPAN JOINT REPLACE 2 IN	62.30	LF
0365	03298	EXPAN JOINT REPLACE 4 IN	62.30	LF
0370	03299	ARMORED EDGE FOR CONCRETE	124.60	LF
0375	08150	STEEL REINFORCEMENT	267.20	LB
0380	24439EC	SEAL BRIDGE DECK	1.00	LS
0385	24981EC	BRIDGE CLEANING - APPLIES TO 048B00116N	1.00	LS
0390	24982EC	CONCRETE COATING - APPLIES TO 048B00116N	1.00	LS
0395	24983EC	BEARING LUBRICATION	12.00	EACH
0400	02569	DEMOBILIZATION	1.00	LS

CONTRACT ID: 182912

048GR18M080-FD04

MB04801191810

US 119 (MP 27.654). BRIDGE OVER POOR FORK OF CUMBERLAND RIVER. BRIDGE REPAIRS EXPANSION JOINTS.

Project Line No	Bid Code	DESCRIPTION	Quantity	Unit
0405	02650	MAINTAIN & CONTROL TRAFFIC - APPLIES TO 048B00117N	1.00	LS
0410	24439EC	SEAL BRIDGE DECK	1.00	LS
0415	24981EC	BRIDGE CLEANING - APPLIES TO 048B00117N	1.00	LS
0420	24982EC	CONCRETE COATING - APPLIES TO 048B00117N	1.00	LS
0425	24983EC	BEARING LUBRICATION	12.00	EACH
0430	02569	DEMOBILIZATION	1.00	LS

MATERIAL SUMMARY

CONTRACT ID: 182912

048GR18M080-FD04

MB04801191811

US 119 (MP 28.394). BRIDGE OVER POOR FORK OF CUMBERLAND RIVER. BRIDGE REPAIRS EXPANSION JOINTS.

Project Line No	Bid Code	DESCRIPTION	Quantity	Unit
0435	02650	MAINTAIN & CONTROL TRAFFIC - APPLIES TO 048B00118N	1.00	LS
0440	03294	EXPAN JOINT REPLACE 1 1/2 IN	45.60	LF
0445	03298	EXPAN JOINT REPLACE 4 IN	45.60	LF
0450	03299	ARMORED EDGE FOR CONCRETE	91.20	LF
0455	08150	STEEL REINFORCEMENT	267.20	LB
0460	24439EC	SEAL BRIDGE DECK	1.00	LS
0465	24981EC	BRIDGE CLEANING - APPLIES TO 048B00118N	1.00	LS
0470	24982EC	CONCRETE COATING - APPLIES TO 048B00118N	1.00	LS
0475	24983EC	BEARING LUBRICATION	12.00	EACH
0480	02569	DEMOBILIZATION	1.00	LS

CONTRACT ID: 182912

048GR18M080-FD04

MB04801191812

US 119 (MP 28.769). BRIDGE OVER POOR FORK OF CUMBERLAND RIVER. BRIDGE REPAIRS EXPANSION JOINTS.

Project Line No	Bid Code	DESCRIPTION	Quantity	Unit
0485	02650	MAINTAIN & CONTROL TRAFFIC - APPLIES TO 048B00119N	1.00	LS
0490	03295	EXPAN JOINT REPLACE 2 IN	62.30	LF
0495	03298	EXPAN JOINT REPLACE 4 IN	62.30	LF
0500	03299	ARMORED EDGE FOR CONCRETE	124.60	LF
0505	08150	STEEL REINFORCEMENT	267.20	LB
0510	24439EC	SEAL BRIDGE DECK	1.00	LS
0515	24981EC	BRIDGE CLEANING - APPLIES TO 048B00119N	1.00	LS
0520	24982EC	CONCRETE COATING - APPLIES TO 048B00119N	1.00	LS
0525	24983EC	BEARING LUBRICATION	12.00	EACH
0530	02569	DEMOBILIZATION	1.00	LS

MATERIAL SUMMARY

CONTRACT ID: 182912

048GR18M080-FD04

MB04801191813

US 119 (MP 29.751). BRIDGE OVER POOR FORK OF CUMBERLAND RIVER. BRIDGE REPAIRS EXPANSION JOINTS.

Project Line No	Bid Code	DESCRIPTION	Quantity	Unit
0535	02650	MAINTAIN & CONTROL TRAFFIC - APPLIES TO 048B00120N	1.00	LS
0540	03298	EXPAN JOINT REPLACE 4 IN	50.80	LF
0545	03299	ARMORED EDGE FOR CONCRETE	50.80	LF
0550	08150	STEEL REINFORCEMENT	133.60	LB
0555	08540	JOINT SEALING - 1.5" SEAL	50.80	LF
0560	24439EC	SEAL BRIDGE DECK	1.00	LS
0565	24981EC	BRIDGE CLEANING - APPLIES TO 048B00120N	1.00	LS
0570	24982EC	CONCRETE COATING - APPLIES TO 048B00120N	1.00	LS
0575	24983EC	BEARING LUBRICATION	12.00	EACH
0580	02569	DEMOBILIZATION	1.00	LS

CONTRACT ID: 182912

048GR18M080-FD04

MB04801191814

US 119 (MP 31.152). BRIDGE OVER POOR FORK OF CUMBERLAND RIVER. BRIDGE REPAIRS EXPANSION JOINTS.

Project Line No	Bid Code	DESCRIPTION	Quantity	Unit
0585	02650	MAINTAIN & CONTROL TRAFFIC - APPLIES TO 048B00121N	1.00	LS
0590	03296	EXPAN JOINT REPLACE 2 1/2 IN	68.50	LF
0595	03298	EXPAN JOINT REPLACE 4 IN	68.50	LF
0600	03299	ARMORED EDGE FOR CONCRETE	137.00	LF
0605	08150	STEEL REINFORCEMENT	267.20	LB
0610	24439EC	SEAL BRIDGE DECK	1.00	LS
0615	24981EC	BRIDGE CLEANING - APPLIES TO 048B00121N	1.00	LS
0620	24982EC	CONCRETE COATING - APPLIES TO 048B00121N	1.00	LS
0625	24983EC	BEARING LUBRICATION	12.00	EACH
0630	02569	DEMOBILIZATION	1.00	LS

MATERIAL SUMMARY

CONTRACT ID: 182912

048GR18M080-FD04

MB04801191815

US 119 (MP 31.892). BRIDGE OVER POOR FORK OF CUMBERLAND RIVER. BRIDGE REPAIRS EXPANSION JOINTS.

Project Line No	Bid Code	DESCRIPTION	Quantity	Unit
0635	02650	MAINTAIN & CONTROL TRAFFIC - APPLIES TO 048B00122N	1.00	LS
0640	03296	EXPAN JOINT REPLACE 2 1/2 IN	52.00	LF
0645	03298	EXPAN JOINT REPLACE 4 IN	52.00	LF
0650	03299	ARMORED EDGE FOR CONCRETE	104.00	LF
0655	08150	STEEL REINFORCEMENT	267.20	LB
0660	24439EC	SEAL BRIDGE DECK	1.00	LS
0665	24981EC	BRIDGE CLEANING - APPLIES TO 048B00122N	1.00	LS
0670	24982EC	CONCRETE COATING - APPLIES TO 048B00122N	1.00	LS
0675	24983EC	BEARING LUBRICATION	12.00	EACH
0680	02569	DEMOBILIZATION	1.00	LS

CONTRACT ID: 182912

048GR18M080-FD04

MB04801191816

US 119 (MP 33.325). BRIDGE OVER POOR FORK OF CUMBERLAND RIVER. BRIDGE REPAIRS EXPANSION JOINTS.

Project Line No	Bid Code	DESCRIPTION	Quantity	Unit
0685	02650	MAINTAIN & CONTROL TRAFFIC - APPLIES TO 048B00123N	1.00	LS
0690	03298	EXPAN JOINT REPLACE 4 IN	76.70	LF
0695	03299	ARMORED EDGE FOR CONCRETE	76.70	LF
0700	08150	STEEL REINFORCEMENT	133.60	LB
0705	08540	JOINT SEALING - 2" SEAL	76.70	LF
0710	24439EC	SEAL BRIDGE DECK	1.00	LS
0715	24981EC	BRIDGE CLEANING - APPLIES TO 048B00123N	1.00	LS
0720	24982EC	CONCRETE COATING - APPLIES TO 048B00123N	1.00	LS
0725	24983EC	BEARING LUBRICATION	12.00	EACH
0730	02569	DEMOBILIZATION	1.00	LS

MATERIAL SUMMARY

CONTRACT ID: 182912

048GR18M080-FD04

MB04801191817

US 119 (MP 33.725). BRIDGE OVER POOR FORK OF CUMBERLAND RIVER. BRIDGE REPAIRS EXPANSION JOINTS.

Project Line No	Bid Code	DESCRIPTION	Quantity	Unit
0735	02650	MAINTAIN & CONTROL TRAFFIC - APPLIES TO 048B00124N	1.00	LS
0740	03294	EXPAN JOINT REPLACE 1 1/2 IN	88.00	LF
0745	03299	ARMORED EDGE FOR CONCRETE	88.00	LF
0750	08150	STEEL REINFORCEMENT	267.20	LB
0755	24439EC	SEAL BRIDGE DECK	1.00	LS
0760	24981EC	BRIDGE CLEANING - APPLIES TO 048B00124N	1.00	LS
0765	24982EC	CONCRETE COATING - APPLIES TO 048B00124N	1.00	LS
0770	02569	DEMOBILIZATION	1.00	LS

CONTRACT ID: 182912

048GR18M080-FD04

MB04801191818

US 119 (MP 34.846). BRIDGE OVER KY 160 AND LOONEY CREEK. BRIDGE REPAIRS EXPANSION JOINTS.

Project Line No	Bid Code	DESCRIPTION	Quantity	Unit
0775	02650	MAINTAIN & CONTROL TRAFFIC - APPLIES TO 048B00126N	1.00	LS
0780	03294	EXPAN JOINT REPLACE 1 1/2 IN	75.00	LF
0785	03299	ARMORED EDGE FOR CONCRETE	75.00	LF
0790	08150	STEEL REINFORCEMENT	133.60	LB
0795	24439EC	SEAL BRIDGE DECK	1.00	LS
0800	24981EC	BRIDGE CLEANING - APPLIES TO 048B00126N	1.00	LS
0805	24982EC	CONCRETE COATING - APPLIES TO 048B00126N	1.00	LS
0810	24983EC	BEARING LUBRICATION	48.00	EACH
0815	02569	DEMOBILIZATION	1.00	LS

MATERIAL SUMMARY

CONTRACT ID: 182912

048GR18M080-FD04

MB04801191819

US 119 (MP 35.611). BRIDGE OVER POOR FORK OF CUMBERLAND RIVER. BRIDGE REPAIRS EXPANSION JOINTS.

Project Line No	Bid Code	DESCRIPTION	Quantity	Unit
0820	02650	MAINTAIN & CONTROL TRAFFIC - APPLIES TO 048B00107N	1.00	LS
0825	03294	EXPAN JOINT REPLACE 1 1/2 IN	47.80	LF
0830	03295	EXPAN JOINT REPLACE 2 IN	88.00	LF
0835	03298	EXPAN JOINT REPLACE 4 IN	49.80	LF
0840	03299	ARMORED EDGE FOR CONCRETE	135.80	LF
0845	08150	STEEL REINFORCEMENT	400.80	LB
0850	24439EC	SEAL BRIDGE DECK	1.00	LS
0855	24981EC	BRIDGE CLEANING - APPLIES TO 048B00107N	1.00	LS
0860	24982EC	CONCRETE COATING - APPLIES TO 048B00107N	1.00	LS
0865	24983EC	BEARING LUBRICATION	48.00	EACH
0870	02569	DEMOBILIZATION	1.00	LS

CONTRACT ID: 182912

048GR18M080-FD04

MB04801191820

US 119 (MP 37.269). BRIDGE OVER POOR FORK OF CUMBERLAND RIVER. BRIDGE REPAIRS EXPANSION JOINTS.

Project Line No	Bid Code	DESCRIPTION	Quantity	Unit
0875	02650	MAINTAIN & CONTROL TRAFFIC - APPLIES TO 048B00162N	1.00	LS
0880	24439EC	SEAL BRIDGE DECK	1.00	LS
0885	24981EC	BRIDGE CLEANING - APPLIES TO 048B00162N	1.00	LS
0890	02569	DEMOBILIZATION	1.00	LS

MATERIAL SUMMARY

CONTRACT ID: 182912

048GR18M080-FD04

MB04801191821

US 119 (MP 37.521). BRIDGE OVER POOR FORK OF CUMBERLAND RIVER. BRIDGE REPAIRS EXPANSION JOINTS.

Project Line No	Bid Code	DESCRIPTION	Quantity	Unit
0895	02650	MAINTAIN & CONTROL TRAFFIC - APPLIES TO 048B00163N	1.00	LS
0900	03295	EXPAN JOINT REPLACE 2 IN	131.60	LF
0905	03299	ARMORED EDGE FOR CONCRETE	131.60	LF
0910	08150	STEEL REINFORCEMENT	267.20	LB
0915	24439EC	SEAL BRIDGE DECK	1.00	LS
0920	24981EC	BRIDGE CLEANING - APPLIES TO 048B00163N	1.00	LS
0925	24982EC	CONCRETE COATING - APPLIES TO 048B00163N	1.00	LS
0930	02569	DEMOBILIZATION	1.00	LS

CONTRACT ID: 182912

048GR18M080-FD04

MB04801191822

US 119 (MP 37.801). BRIDGE OVER POOR FORK OF CUMBERLAND RIVER. BRIDGE REPAIRS EXPANSION JOINTS.

Project Line No	Bid Code	DESCRIPTION	Quantity	Unit
0935	02650	MAINTAIN & CONTROL TRAFFIC - APPLIES TO 048B00164N	1.00	LS
0940	24439EC	SEAL BRIDGE DECK	1.00	LS
0945	24981EC	BRIDGE CLEANING - APPLIES TO 048B00164N	1.00	LS
0950	02569	DEMOBILIZATION	1.00	LS

MATERIAL SUMMARY

CONTRACT ID: 182912

048GR18M080-FD04

MB04801191823

US 119 (MP 38.089). BRIDGE OVER POOR FORK OF CUMBERLAND RIVER. BRIDGE REPAIRS EXPANSION JOINTS.

Project Line No	Bid Code	DESCRIPTION	Quantity	Unit
0955	02650	MAINTAIN & CONTROL TRAFFIC - APPLIES TO 048B00165N	1.00	LS
0960	03295	EXPAN JOINT REPLACE 2 IN	107.40	LF
0965	03299	ARMORED EDGE FOR CONCRETE	107.40	LF
0970	08150	STEEL REINFORCEMENT	267.20	LB
0975	24439EC	SEAL BRIDGE DECK	1.00	LS
0980	24981EC	BRIDGE CLEANING - APPLIES TO 048B00165N	1.00	LS
0985	24982EC	CONCRETE COATING - APPLIES TO 048B00165N	1.00	LS
0990	02569	DEMOBILIZATION	1.00	LS

CONTRACT ID: 182912

048GR18M080-FD04

MB04801191824

US 119 (MP 38.439). BRIDGE OVER POOR FORK OF CUMBERLAND RIVER. BRIDGE REPAIRS EXPANSION JOINTS.

Project Line No	Bid Code	DESCRIPTION	Quantity	Unit
0995	02650	MAINTAIN & CONTROL TRAFFIC - APPLIES TO 048B00161N	1.00	LS
1000	24439EC	SEAL BRIDGE DECK	1.00	LS
1005	24981EC	BRIDGE CLEANING - APPLIES TO 048B00161N	1.00	LS
1010	02569	DEMOBILIZATION	1.00	LS

CONTRACT ID: 182912

048GR18M080-FD04

MB04801191825

US 119 (MP 39.068). BRIDGE OVER POOR FORK OF CUMBERLAND RIVER. BRIDGE REPAIRS EXPANSION JOINTS.

Project Line No	Bid Code	DESCRIPTION	Quantity	Unit
1015	02650	MAINTAIN & CONTROL TRAFFIC - APPLIES TO 048B00160N	1.00	LS
1020	24439EC	SEAL BRIDGE DECK	1.00	LS
1025	24981EC	BRIDGE CLEANING - APPLIES TO 048B00160N	1.00	LS
1030	02569	DEMOBILIZATION	1.00	LS

PART II
SPECIFICATIONS AND STANDARD DRAWINGS

SPECIFICATIONS REFERENCE

Any reference in the plans or proposal to previous editions of the *Standard Specifications for Road and Bridge Construction* and *Standard Drawings* are superseded by *Standard Specifications for Road and Bridge Construction, Edition of 2012* and *Standard Drawings, Edition of 2016*.

SUPPLEMENTAL SPECIFICATIONS

The contractor shall use the Supplemental Specifications that are effective at the time of letting.
The Supplemental Specifications can be found at the following link:

<http://transportation.ky.gov/Construction/Pages/Kentucky-Standard-Specifications.aspx>

PART III

EMPLOYMENT, WAGE AND RECORD REQUIREMENTS

**TRANSPORTATION CABINET
DEPARTMENT OF HIGHWAYS**

**LABOR AND WAGE REQUIREMENTS
APPLICABLE TO OTHER THAN FEDERAL-AID SYSTEM PROJECTS**

- I. Application
- II. Nondiscrimination of Employees (KRS 344)

I. APPLICATION

1. These contract provisions shall apply to all work performed on the contract by the contractor with his own organization and with the assistance of workmen under his immediate superintendence and to all work performed on the contract by piecework, station work or by subcontract. The contractor's organization shall be construed to include only workmen employed and paid directly by the contractor and equipment owned or rented by him, with or without operators.

2. The contractor shall insert in each of his subcontracts all of the stipulations contained in these Required Provisions and such other stipulations as may be required.

3. A breach of any of the stipulations contained in these Required Provisions may be grounds for termination of the contract.

3. If the contractor is in control of apprenticeship or other training or retraining, including on-the-job training programs, he shall not discriminate against an individual because of his race, color, religion, national origin, sex, disability or age forty (40) and over, in admission to, or employment in any program established to provide apprenticeship or other training.

4. The contractor will send to each labor union or representative of workers with which he has a collective bargaining agreement or other contract or understanding, a notice to be provided advising the said labor union or workers' representative of the contractor's commitments under this section, and shall post copies of the notice in conspicuous places available to employees and applicants for employment. The contractor will take such action with respect to any subcontract or purchase order as the administrating agency may direct as a means of enforcing such provisions, including sanctions for non-compliance.

Revised: January 25, 2017

II. NONDISCRIMINATION OF EMPLOYEES

**AN ACT OF THE KENTUCKY
GENERAL ASSEMBLY TO PREVENT
DISCRIMINATION IN EMPLOYMENT
KRS CHAPTER 344
EFFECTIVE JUNE 16, 1972**

The contract on this project, in accordance with KRS Chapter 344, provides that during the performance of this contract, the contractor agrees as follows:

1. The contractor shall not fail or refuse to hire, or shall not discharge any individual, or otherwise discriminate against an individual with respect to his compensation, terms, conditions, or privileges of employment, because of such individual's race, color, religion, national origin, sex, disability or age (forty and above); or limit, segregate, or classify his employees in any way which would deprive or tend to deprive an individual of employment opportunities or otherwise adversely affect his status as an employee, because of such individual's race, color, religion, national origin, sex, disability or age forty (40) and over. The contractor agrees to post in conspicuous places, available to employees and applicants for employment, notices to be provided setting forth the provisions of this nondiscrimination clause.

2. The contractor shall not print or publish or cause to be printed or published a notice or advertisement relating to employment by such an employer or membership in or any classification or referral for employment by the employment agency, indicating any preference, limitation, specification, or discrimination, based on race, color, religion, national origin, sex, or age forty (40) and over, or because the person is a qualified individual with a disability, except that such a notice or advertisement may indicate a preference, limitation, or specification based on religion, national origin, sex, or age forty (40) and over, or because the person is a qualified individual with a disability, when religion, national origin, sex, or age forty (40) and over, or because the person is a qualified individual with a disability, is a bona fide occupational qualification for employment.

EXECUTIVE BRANCH CODE OF ETHICS

In the 1992 regular legislative session, the General Assembly passed and Governor Brereton Jones signed Senate Bill 63 (codified as KRS 11A), the Executive Branch Code of Ethics, which states, in part:

KRS 11A.040 (7) provides:

No present or former public servant shall, within six (6) months following termination of his office or employment, accept employment, compensation, or other economic benefit from any person or business that contracts or does business with, or is regulated by, the state in matters in which he was directly involved during the last thirty-six (36) months of his tenure. This provision shall not prohibit an individual from returning to the same business, firm, occupation, or profession in which he was involved prior to taking office or beginning his term of employment, or for which he received, prior to his state employment, a professional degree or license, provided that, for a period of six (6) months, he personally refrains from working on any matter in which he was directly involved during the last thirty-six (36) months of his tenure in state government. This subsection shall not prohibit the performance of ministerial functions, including but not limited to filing tax returns, filing applications for permits or licenses, or filing incorporation papers, nor shall it prohibit the former officer or public servant from receiving public funds disbursed through entitlement programs.

KRS 11A.040 (9) states:

A former public servant shall not represent a person or business before a state agency in a matter in which the former public servant was directly involved during the last thirty-six (36) months of his tenure, for a period of one (1) year after the latter of:

- a) The date of leaving office or termination of employment; or
- b) The date the term of office expires to which the public servant was elected.

This law is intended to promote public confidence in the integrity of state government and to declare as public policy the idea that state employees should view their work as a public trust and not as a way to obtain private benefits.

If you have worked for the executive branch of state government within the past six months, you may be subject to the law's prohibitions. The law's applicability may be different if you hold elected office or are contemplating representation of another before a state agency.

Also, if you are affiliated with a firm which does business with the state and which employs former state executive-branch employees, you should be aware that the law may apply to them.

In case of doubt, the law permits you to request an advisory opinion from the Executive Branch Ethics Commission, 3 Fountain Place, Frankfort, Kentucky 40601; telephone (502) 564-7954.

Revised: January 27, 2017

Kentucky Equal Employment Opportunity Act of 1978

The requirements of the Kentucky Equal Employment Opportunity Act of 1978 (KRS 45.560-45.640) shall apply to this Contract. The apparent low Bidder will be required to submit EEO forms to the Division of Construction Procurement, which will then forward to the Finance and Administration Cabinet for review and approval. No award will become effective until all forms are submitted and EEO/CC has certified compliance. The required EEO forms are as follows:

- EEO-1: Employer Information Report
- Affidavit of Intent to Comply
- Employee Data Sheet
- Subcontractor Report

These forms are available on the Finance and Administration's web page under ***Vendor Information, Standard Attachments and General Terms*** at the following address:
<https://www.eProcurement.ky.gov>.

Bidders currently certified as being in compliance by the Finance and Administration Cabinet may submit a copy of their approval letter in lieu of the referenced EEO forms.

For questions or assistance please contact the Finance and Administration Cabinet by email at **finance.contractcompliance@ky.gov** or by phone at 502-564-2874.

EMPLOYEE RIGHTS UNDER THE FAIR LABOR STANDARDS ACT

THE UNITED STATES DEPARTMENT OF LABOR WAGE AND HOUR DIVISION

FEDERAL MINIMUM WAGE

\$7.25

 PER HOUR

BEGINNING JULY 24, 2009

OVERTIME PAY At least 1½ times your regular rate of pay for all hours worked over 40 in a workweek.

CHILD LABOR An employee must be at least **16** years old to work in most non-farm jobs and at least **18** to work in non-farm jobs declared hazardous by the Secretary of Labor.

Youths **14** and **15** years old may work outside school hours in various non-manufacturing, non-mining, non-hazardous jobs under the following conditions:

No more than

- **3** hours on a school day or **18** hours in a school week;
- **8** hours on a non-school day or **40** hours in a non-school week.

Also, work may not begin before **7 a.m.** or end after **7 p.m.**, except from June 1 through Labor Day, when evening hours are extended to **9 p.m.** Different rules apply in agricultural employment.

TIP CREDIT Employers of “tipped employees” must pay a cash wage of at least \$2.13 per hour if they claim a tip credit against their minimum wage obligation. If an employee’s tips combined with the employer’s cash wage of at least \$2.13 per hour do not equal the minimum hourly wage, the employer must make up the difference. Certain other conditions must also be met.

ENFORCEMENT The Department of Labor may recover back wages either administratively or through court action, for the employees that have been underpaid in violation of the law. Violations may result in civil or criminal action.

Employers may be assessed civil money penalties of up to \$1,100 for each willful or repeated violation of the minimum wage or overtime pay provisions of the law and up to \$11,000 for each employee who is the subject of a violation of the Act’s child labor provisions. In addition, a civil money penalty of up to \$50,000 may be assessed for each child labor violation that causes the death or serious injury of any minor employee, and such assessments may be doubled, up to \$100,000, when the violations are determined to be willful or repeated. The law also prohibits discriminating against or discharging workers who file a complaint or participate in any proceeding under the Act.

ADDITIONAL INFORMATION

- Certain occupations and establishments are exempt from the minimum wage and/or overtime pay provisions.
- Special provisions apply to workers in American Samoa and the Commonwealth of the Northern Mariana Islands.
- Some state laws provide greater employee protections; employers must comply with both.
- The law requires employers to display this poster where employees can readily see it.
- Employees under 20 years of age may be paid \$4.25 per hour during their first 90 consecutive calendar days of employment with an employer.
- Certain full-time students, student learners, apprentices, and workers with disabilities may be paid less than the minimum wage under special certificates issued by the Department of Labor.

For additional information:



1-866-4-USWAGE

(1-866-487-9243) TTY: 1-877-889-5627



WWW.WAGEHOUR.DOL.GOV

PART IV
INSURANCE

INSURANCE

The Contractor shall procure and maintain the following insurance in addition to the insurance required by law:

- 1) Commercial General Liability-Occurrence form – not less than \$2,000,000 General aggregate, \$2,000,000 Products & Completed Aggregate, \$1,000,000 Personal & Advertising, \$1,000,000 each occurrence.
- 2) Automobile Liability- \$1,000,000 per accident
- 3) Employers Liability:
 - a) \$100,000 Each Accident Bodily Injury
 - b) \$500,000 Policy limit Bodily Injury by Disease
 - c) \$100,000 Each Employee Bodily Injury by Disease
- 4) The insurance required above must be evidenced by a Certificate of Insurance and this Certificate of Insurance must contain one of the following statements:
 - a) "policy contains no deductible clauses."
 - b) "policy contains _____ (amount) deductible property damage clause but company will pay claim and collect the deductible from the insured."
- 5) **KENTUCKY WORKMEN'S COMPENSATION INSURANCE.** The contractor shall furnish evidence of coverage of all his employees or give evidence of self-insurance by submitting a copy of a certificate issued by the Workmen's Compensation Board.

The cost of insurance is incidental to all contract items. All subcontractors must meet the same minimum insurance requirements.

PART V
BID ITEMS

PROPOSAL BID ITEMS

182912

Page 1 of 8

Report Date 10/3/18

Section: 0001 - BRIDGE

LINE	BID CODE	ALT	DESCRIPTION	QUANTITY	UNIT	UNIT PRIC	FP	AMOUNT
0010	02650		MAINTAIN & CONTROL TRAFFIC APPLIES TO 048B00110N	1.00	LS		\$	
0020	03295		EXPAN JOINT REPLACE 2 IN	70.00	LF		\$	
0030	03298		EXPAN JOINT REPLACE 4 IN	70.00	LF		\$	
0040	03299		ARMORED EDGE FOR CONCRETE	140.00	LF		\$	
0050	08150		STEEL REINFORCEMENT	267.20	LB		\$	
0060	24439EC		SEAL BRIDGE DECK	1.00	LS		\$	
0070	24981EC		BRIDGE CLEANING APPLIES TO 048B00110N	1.00	LS		\$	
0080	24982EC		CONCRETE COATING APPLIES TO 048B00110N	1.00	LS		\$	
0090	24983EC		BEARING LUBRICATION	12.00	EACH		\$	

Section: 0002 - BRIDGE

LINE	BID CODE	ALT	DESCRIPTION	QUANTITY	UNIT	UNIT PRIC	FP	AMOUNT
0100	02650		MAINTAIN & CONTROL TRAFFIC APPLIES TO 048B00111N	1.00	LS		\$	
0110	03298		EXPAN JOINT REPLACE 4 IN	50.80	LF		\$	
0120	03299		ARMORED EDGE FOR CONCRETE	50.80	LF		\$	
0130	08150		STEEL REINFORCEMENT	133.60	LB		\$	
0140	08540		JOINT SEALING 2" SEAL	50.80	LF		\$	
0150	24439EC		SEAL BRIDGE DECK	1.00	LS		\$	
0160	24981EC		BRIDGE CLEANING APPLIES TO 048B00111N	1.00	LS		\$	
0170	24982EC		CONCRETE COATING APPLIES TO 048B00111N	1.00	LS		\$	
0180	24983EC		BEARING LUBRICATION	12.00	EACH		\$	

Section: 0003 - BRIDGE

LINE	BID CODE	ALT	DESCRIPTION	QUANTITY	UNIT	UNIT PRIC	FP	AMOUNT
0190	02650		MAINTAIN & CONTROL TRAFFIC APPLIES TO 048B00100N	1.00	LS		\$	
0200	03295		EXPAN JOINT REPLACE 2 IN	78.70	LF		\$	
0210	03298		EXPAN JOINT REPLACE 4 IN	78.70	LF		\$	
0220	03299		ARMORED EDGE FOR CONCRETE	157.40	LF		\$	
0230	08150		STEEL REINFORCEMENT	267.20	LB		\$	
0240	24439EC		SEAL BRIDGE DECK	1.00	LS		\$	
0250	24981EC		BRIDGE CLEANING APPLIES TO 048B00100N	1.00	LS		\$	
0260	24982EC		CONCRETE COATING APPLIES TO 048B00100N	1.00	LS		\$	
0270	24983EC		BEARING LUBRICATION	12.00	EACH		\$	

PROPOSAL BID ITEMS

182912

Page 2 of 8

Report Date 10/3/18

Section: 0004 - BRIDGE

LINE	BID CODE	ALT	DESCRIPTION	QUANTITY	UNIT	UNIT PRIC	FP	AMOUNT
0280	02650		MAINTAIN & CONTROL TRAFFIC APPLIES TO 048B00101N	1.00	LS		\$	
0290	03298		EXPAN JOINT REPLACE 4 IN	78.70	LF		\$	
0300	03299		ARMORED EDGE FOR CONCRETE	78.70	LF		\$	
0310	08150		STEEL REINFORCEMENT	133.60	LB		\$	
0320	08540		JOINT SEALING 1.5" SEAL	78.70	LF		\$	
0330	24439EC		SEAL BRIDGE DECK	1.00	LS		\$	
0340	24981EC		BRIDGE CLEANING APPLIES TO 048B00101N	1.00	LS		\$	
0350	24982EC		CONCRETE COATING APPLIES TO 048B00101N	1.00	LS		\$	
0360	24983EC		BEARING LUBRICATION	12.00	EACH		\$	

Section: 0005 - BRIDGE

LINE	BID CODE	ALT	DESCRIPTION	QUANTITY	UNIT	UNIT PRIC	FP	AMOUNT
0370	02650		MAINTAIN & CONTROL TRAFFIC APPLIES TO 048B00112N	1.00	LS		\$	
0380	03295		EXPAN JOINT REPLACE 2 IN	111.00	LF		\$	
0390	03299		ARMORED EDGE FOR CONCRETE	111.00	LF		\$	
0400	08150		STEEL REINFORCEMENT	267.20	LB		\$	
0410	24439EC		SEAL BRIDGE DECK	1.00	LS		\$	
0420	24981EC		BRIDGE CLEANING APPLIES TO 048B00112N	1.00	LS		\$	
0430	24982EC		CONCRETE COATING APPLIES TO 048B00112N	1.00	LS		\$	

Section: 0006 - BRIDGE

LINE	BID CODE	ALT	DESCRIPTION	QUANTITY	UNIT	UNIT PRIC	FP	AMOUNT
0440	02650		MAINTAIN & CONTROL TRAFFIC APPLIES TO 048B00113N	1.00	LS		\$	
0450	08540		JOINT SEALING 1" SEAL	98.00	LF		\$	
0460	24439EC		SEAL BRIDGE DECK	1.00	LS		\$	
0470	24981EC		BRIDGE CLEANING APPLIES TO 048B00113N	1.00	LS		\$	
0480	24982EC		CONCRETE COATING APPLIES TO 048B00113N	1.00	LS		\$	

Section: 0007 - BRIDGE

LINE	BID CODE	ALT	DESCRIPTION	QUANTITY	UNIT	UNIT PRIC	FP	AMOUNT
0490	02650		MAINTAIN & CONTROL TRAFFIC APPLIES TO 048B00114N	1.00	LS		\$	
0500	03295		EXPAN JOINT REPLACE 2 IN	98.00	LF		\$	
0510	03299		ARMORED EDGE FOR CONCRETE	98.00	LF		\$	

PROPOSAL BID ITEMS

182912

Page 3 of 8

Report Date 10/3/18

LINE	BID CODE	ALT	DESCRIPTION	QUANTITY	UNIT	UNIT PRIC	FP	AMOUNT
0520	08150		STEEL REINFORCEMENT	267.20	LB		\$	
0530	24439EC		SEAL BRIDGE DECK	1.00	LS		\$	
0540	24981EC		BRIDGE CLEANING APPLIES TO 048B00114N	1.00	LS		\$	
0550	24982EC		CONCRETE COATING APPLIES TO 048B00114N	1.00	LS		\$	

Section: 0008 - BRIDGE

LINE	BID CODE	ALT	DESCRIPTION	QUANTITY	UNIT	UNIT PRIC	FP	AMOUNT
0560	02650		MAINTAIN & CONTROL TRAFFIC APPLIES TO 048B00115N	1.00	LS		\$	
0570	03295		EXPAN JOINT REPLACE 2 IN	111.00	LF		\$	
0580	03299		ARMORED EDGE FOR CONCRETE	111.00	LF		\$	
0590	08150		STEEL REINFORCEMENT	267.20	LB		\$	
0600	24439EC		SEAL BRIDGE DECK	1.00	LS		\$	
0610	24981EC		BRIDGE CLEANING APPLIES TO 048B00115N	1.00	LS		\$	
0620	24982EC		CONCRETE COATING APPLIES TO 048B00115N	1.00	LS		\$	

Section: 0009 - BRIDGE

LINE	BID CODE	ALT	DESCRIPTION	QUANTITY	UNIT	UNIT PRIC	FP	AMOUNT
0630	02650		MAINTAIN & CONTROL TRAFFIC APPLIES TO 048B00116N	1.00	LS		\$	
0640	03295		EXPAN JOINT REPLACE 2 IN	62.30	LF		\$	
0650	03298		EXPAN JOINT REPLACE 4 IN	62.30	LF		\$	
0660	03299		ARMORED EDGE FOR CONCRETE	124.60	LF		\$	
0670	08150		STEEL REINFORCEMENT	267.20	LB		\$	
0680	24439EC		SEAL BRIDGE DECK	1.00	LS		\$	
0690	24981EC		BRIDGE CLEANING APPLIES TO 048B00116N	1.00	LS		\$	
0700	24982EC		CONCRETE COATING APPLIES TO 048B00116N	1.00	LS		\$	
0710	24983EC		BEARING LUBRICATION	12.00	EACH		\$	

Section: 0010 - BRIDGE

LINE	BID CODE	ALT	DESCRIPTION	QUANTITY	UNIT	UNIT PRIC	FP	AMOUNT
0720	02650		MAINTAIN & CONTROL TRAFFIC APPLIES TO 048B00117N	1.00	LS		\$	
0730	24439EC		SEAL BRIDGE DECK	1.00	LS		\$	
0740	24981EC		BRIDGE CLEANING APPLIES TO 048B00117N	1.00	LS		\$	
0750	24982EC		CONCRETE COATING APPLIES TO 048B00117N	1.00	LS		\$	
0760	24983EC		BEARING LUBRICATION	12.00	EACH		\$	

PROPOSAL BID ITEMS

182912

Page 4 of 8

Report Date 10/3/18

Section: 0011 - BRIDGE

LINE	BID CODE	ALT	DESCRIPTION	QUANTITY	UNIT	UNIT PRIC	FP	AMOUNT
0770	02650		MAINTAIN & CONTROL TRAFFIC APPLIES TO 048B00118N	1.00	LS		\$	
0780	03294		EXPAN JOINT REPLACE 1 1/2 IN	45.60	LF		\$	
0790	03298		EXPAN JOINT REPLACE 4 IN	45.60	LF		\$	
0800	03299		ARMORED EDGE FOR CONCRETE	91.20	LF		\$	
0810	08150		STEEL REINFORCEMENT	267.20	LB		\$	
0820	24439EC		SEAL BRIDGE DECK	1.00	LS		\$	
0830	24981EC		BRIDGE CLEANING APPLIES TO 048B00118N	1.00	LS		\$	
0840	24982EC		CONCRETE COATING APPLIES TO 048B00118N	1.00	LS		\$	
0850	24983EC		BEARING LUBRICATION	12.00	EACH		\$	

Section: 0012 - BRIDGE

LINE	BID CODE	ALT	DESCRIPTION	QUANTITY	UNIT	UNIT PRIC	FP	AMOUNT
0860	02650		MAINTAIN & CONTROL TRAFFIC APPLIES TO 048B00119N	1.00	LS		\$	
0870	03295		EXPAN JOINT REPLACE 2 IN	62.30	LF		\$	
0880	03298		EXPAN JOINT REPLACE 4 IN	62.30	LF		\$	
0890	03299		ARMORED EDGE FOR CONCRETE	124.60	LF		\$	
0900	08150		STEEL REINFORCEMENT	267.20	LB		\$	
0910	24439EC		SEAL BRIDGE DECK	1.00	LS		\$	
0920	24981EC		BRIDGE CLEANING APPLIES TO 048B00119N	1.00	LS		\$	
0930	24982EC		CONCRETE COATING APPLIES TO 048B00119N	1.00	LS		\$	
0940	24983EC		BEARING LUBRICATION	12.00	EACH		\$	

Section: 0013 - BRIDGE

LINE	BID CODE	ALT	DESCRIPTION	QUANTITY	UNIT	UNIT PRIC	FP	AMOUNT
0950	02650		MAINTAIN & CONTROL TRAFFIC APPLIES TO 048B00120N	1.00	LS		\$	
0960	03298		EXPAN JOINT REPLACE 4 IN	50.80	LF		\$	
0970	03299		ARMORED EDGE FOR CONCRETE	50.80	LF		\$	
0980	08150		STEEL REINFORCEMENT	133.60	LB		\$	
0990	08540		JOINT SEALING 1.5" SEAL	50.80	LF		\$	
1000	24439EC		SEAL BRIDGE DECK	1.00	LS		\$	
1010	24981EC		BRIDGE CLEANING APPLIES TO 048B00120N	1.00	LS		\$	
1020	24982EC		CONCRETE COATING APPLIES TO 048B00120N	1.00	LS		\$	
1030	24983EC		BEARING LUBRICATION	12.00	EACH		\$	

PROPOSAL BID ITEMS

182912

Page 5 of 8

Report Date 10/3/18

Section: 0014 - BRIDGE

LINE	BID CODE	ALT	DESCRIPTION	QUANTITY	UNIT	UNIT PRIC	FP	AMOUNT
1040	02650		MAINTAIN & CONTROL TRAFFIC APPLIES TO 048B00121N	1.00	LS		\$	
1050	03296		EXPAN JOINT REPLACE 2 1/2 IN	68.50	LF		\$	
1060	03298		EXPAN JOINT REPLACE 4 IN	68.50	LF		\$	
1070	03299		ARMORED EDGE FOR CONCRETE	137.00	LF		\$	
1080	08150		STEEL REINFORCEMENT	267.20	LB		\$	
1090	24439EC		SEAL BRIDGE DECK	1.00	LS		\$	
1100	24981EC		BRIDGE CLEANING APPLIES TO 048B00121N	1.00	LS		\$	
1110	24982EC		CONCRETE COATING APPLIES TO 048B00121N	1.00	LS		\$	
1120	24983EC		BEARING LUBRICATION	12.00	EACH		\$	

Section: 0015 - BRIDGE

LINE	BID CODE	ALT	DESCRIPTION	QUANTITY	UNIT	UNIT PRIC	FP	AMOUNT
1130	02650		MAINTAIN & CONTROL TRAFFIC APPLIES TO 048B00122N	1.00	LS		\$	
1140	03296		EXPAN JOINT REPLACE 2 1/2 IN	52.00	LF		\$	
1150	03298		EXPAN JOINT REPLACE 4 IN	52.00	LF		\$	
1160	03299		ARMORED EDGE FOR CONCRETE	104.00	LF		\$	
1170	08150		STEEL REINFORCEMENT	267.20	LB		\$	
1180	24439EC		SEAL BRIDGE DECK	1.00	LS		\$	
1190	24981EC		BRIDGE CLEANING APPLIES TO 048B00122N	1.00	LS		\$	
1200	24982EC		CONCRETE COATING APPLIES TO 048B00122N	1.00	LS		\$	
1210	24983EC		BEARING LUBRICATION	12.00	EACH		\$	

Section: 0016 - BRIDGE

LINE	BID CODE	ALT	DESCRIPTION	QUANTITY	UNIT	UNIT PRIC	FP	AMOUNT
1220	02650		MAINTAIN & CONTROL TRAFFIC APPLIES TO 048B00123N	1.00	LS		\$	
1230	03298		EXPAN JOINT REPLACE 4 IN	76.70	LF		\$	
1240	03299		ARMORED EDGE FOR CONCRETE	76.70	LF		\$	
1250	08150		STEEL REINFORCEMENT	133.60	LB		\$	
1260	08540		JOINT SEALING 2" SEAL	76.70	LF		\$	
1270	24439EC		SEAL BRIDGE DECK	1.00	LS		\$	
1280	24981EC		BRIDGE CLEANING APPLIES TO 048B00123N	1.00	LS		\$	
1290	24982EC		CONCRETE COATING APPLIES TO 048B00123N	1.00	LS		\$	
1300	24983EC		BEARING LUBRICATION	12.00	EACH		\$	

Section: 0017 - BRIDGE

PROPOSAL BID ITEMS

182912

Page 6 of 8

Report Date 10/3/18

Section: 0017 - BRIDGE

LINE	BID CODE	ALT	DESCRIPTION	QUANTITY	UNIT	UNIT PRIC	FP	AMOUNT
1310	02650		MAINTAIN & CONTROL TRAFFIC APPLIES TO 048B00124N	1.00	LS		\$	
1320	03294		EXPAN JOINT REPLACE 1 1/2 IN	88.00	LF		\$	
1330	03299		ARMORED EDGE FOR CONCRETE	88.00	LF		\$	
1340	08150		STEEL REINFORCEMENT	267.20	LB		\$	
1350	24439EC		SEAL BRIDGE DECK	1.00	LS		\$	
1360	24981EC		BRIDGE CLEANING APPLIES TO 048B00124N	1.00	LS		\$	
1370	24982EC		CONCRETE COATING APPLIES TO 048B00124N	1.00	LS		\$	

Section: 0018 - BRIDGE

LINE	BID CODE	ALT	DESCRIPTION	QUANTITY	UNIT	UNIT PRIC	FP	AMOUNT
1380	02650		MAINTAIN & CONTROL TRAFFIC APPLIES TO 048B00126N	1.00	LS		\$	
1390	03294		EXPAN JOINT REPLACE 1 1/2 IN	75.00	LF		\$	
1400	03299		ARMORED EDGE FOR CONCRETE	75.00	LF		\$	
1410	08150		STEEL REINFORCEMENT	133.60	LB		\$	
1420	24439EC		SEAL BRIDGE DECK	1.00	LS		\$	
1430	24981EC		BRIDGE CLEANING APPLIES TO 048B00126N	1.00	LS		\$	
1440	24982EC		CONCRETE COATING APPLIES TO 048B00126N	1.00	LS		\$	
1450	24983EC		BEARING LUBRICATION	48.00	EACH		\$	

Section: 0019 - BRIDGE

LINE	BID CODE	ALT	DESCRIPTION	QUANTITY	UNIT	UNIT PRIC	FP	AMOUNT
1460	02650		MAINTAIN & CONTROL TRAFFIC APPLIES TO 048B00107N	1.00	LS		\$	
1470	03294		EXPAN JOINT REPLACE 1 1/2 IN	47.80	LF		\$	
1480	03295		EXPAN JOINT REPLACE 2 IN	88.00	LF		\$	
1490	03298		EXPAN JOINT REPLACE 4 IN	49.80	LF		\$	
1500	03299		ARMORED EDGE FOR CONCRETE	135.80	LF		\$	
1510	08150		STEEL REINFORCEMENT	400.80	LB		\$	
1520	24439EC		SEAL BRIDGE DECK	1.00	LS		\$	
1530	24981EC		BRIDGE CLEANING APPLIES TO 048B00107N	1.00	LS		\$	
1540	24982EC		CONCRETE COATING APPLIES TO 048B00107N	1.00	LS		\$	
1550	24983EC		BEARING LUBRICATION	48.00	EACH		\$	

Section: 0020 - BRIDGE

LINE	BID CODE	ALT	DESCRIPTION	QUANTITY	UNIT	UNIT PRIC	FP	AMOUNT
1560	02650		MAINTAIN & CONTROL TRAFFIC APPLIES TO 048B00162N	1.00	LS		\$	

PROPOSAL BID ITEMS

182912

Page 7 of 8

Report Date 10/3/18

LINE	BID CODE	ALT	DESCRIPTION	QUANTITY	UNIT	UNIT PRIC	FP	AMOUNT
1570	24439EC		SEAL BRIDGE DECK	1.00	LS		\$	
1580	24981EC		BRIDGE CLEANING APPLIES TO 048B00162N	1.00	LS		\$	

Section: 0021 - BRIDGE

LINE	BID CODE	ALT	DESCRIPTION	QUANTITY	UNIT	UNIT PRIC	FP	AMOUNT
1590	02650		MAINTAIN & CONTROL TRAFFIC APPLIES TO 048B00163N	1.00	LS		\$	
1600	03295		EXPAN JOINT REPLACE 2 IN	131.60	LF		\$	
1610	03299		ARMORED EDGE FOR CONCRETE	131.60	LF		\$	
1620	08150		STEEL REINFORCEMENT	267.20	LB		\$	
1630	24439EC		SEAL BRIDGE DECK	1.00	LS		\$	
1640	24981EC		BRIDGE CLEANING APPLIES TO 048B00163N	1.00	LS		\$	
1650	24982EC		CONCRETE COATING APPLIES TO 048B00163N	1.00	LS		\$	

Section: 0022 - BRIDGE

LINE	BID CODE	ALT	DESCRIPTION	QUANTITY	UNIT	UNIT PRIC	FP	AMOUNT
1660	02650		MAINTAIN & CONTROL TRAFFIC APPLIES TO 048B00164N	1.00	LS		\$	
1670	24439EC		SEAL BRIDGE DECK	1.00	LS		\$	
1680	24981EC		BRIDGE CLEANING APPLIES TO 048B00164N	1.00	LS		\$	

Section: 0023 - BRIDGE

LINE	BID CODE	ALT	DESCRIPTION	QUANTITY	UNIT	UNIT PRIC	FP	AMOUNT
1690	02650		MAINTAIN & CONTROL TRAFFIC APPLIES TO 048B00165N	1.00	LS		\$	
1700	03295		EXPAN JOINT REPLACE 2 IN	107.40	LF		\$	
1710	03299		ARMORED EDGE FOR CONCRETE	107.40	LF		\$	
1720	08150		STEEL REINFORCEMENT	267.20	LB		\$	
1730	24439EC		SEAL BRIDGE DECK	1.00	LS		\$	
1740	24981EC		BRIDGE CLEANING APPLIES TO 048B00165N	1.00	LS		\$	
1750	24982EC		CONCRETE COATING APPLIES TO 048B00165N	1.00	LS		\$	

Section: 0024 - BRIDGE

LINE	BID CODE	ALT	DESCRIPTION	QUANTITY	UNIT	UNIT PRIC	FP	AMOUNT
1760	02650		MAINTAIN & CONTROL TRAFFIC APPLIES TO 048B00161N	1.00	LS		\$	
1770	24439EC		SEAL BRIDGE DECK	1.00	LS		\$	

PROPOSAL BID ITEMS

182912

Page 8 of 8

Report Date 10/3/18

LINE	BID CODE	ALT	DESCRIPTION	QUANTITY	UNIT	UNIT PRIC	FP	AMOUNT
1780	24981EC		BRIDGE CLEANING APPLIES TO 048B00161N	1.00	LS		\$	

Section: 0025 - BRIDGE

LINE	BID CODE	ALT	DESCRIPTION	QUANTITY	UNIT	UNIT PRIC	FP	AMOUNT
1790	02650		MAINTAIN & CONTROL TRAFFIC APPLIES TO 048B00160N	1.00	LS		\$	
1800	24439EC		SEAL BRIDGE DECK	1.00	LS		\$	
1810	24981EC		BRIDGE CLEANING APPLIES TO 048B00160N	1.00	LS		\$	

Section: 0026 - DEMOBILIZATION

LINE	BID CODE	ALT	DESCRIPTION	QUANTITY	UNIT	UNIT PRIC	FP	AMOUNT
1820	02569		DEMOBILIZATION	1.00	LS		\$	